



Stellar File Wipe

User Guide

Version 4.1

Overview

Data Wiping, also called data erasing, is used to clear private or any data that must be deleted in such a way that it is not recoverable by any means. Stellar File Wipe application employs overwriting techniques to make the data unrecoverable. Many bit patterns are written over the data. These bit patterns have no meaning and no useful information can be taken out of the data after it is overwritten. Memory is completely reusable after data erasing activity.

Wipe Data Permanently

Commands and tools provided by operating system do not delete the files permanently. Instead only their link to the file structure is deleted. Files must be deleted permanently to ensure full privacy and security. Wipe Now feature of Stellar File Wipe application wipes drive, folders and files permanently making them unrecoverable by any means.

Wipe Unused and Slack Space

Files deleted using operating system options only loose their link in the file system. The space acquired by them is still occupied. Also when a file is saved a lot of space is left as slack at end of the file. These spaces can be a threat to user's privacy, as the content can be recovered or analyzed by simple data recovery tools available. Stellar File Wipe ensures full privacy and space optimization by wiping the used and slack space by help of strong algorithms.

Wipe Traces Left by Application and Internet Browsers

All the activities performed in Internet browsers whether it is typing a URL, a user name/password, or a typed text in search engine is recorded silently. Also, running applications some time save files to help themselves in their execution. It can also be that many temporary files are left undeleted after installation or uninstallation of the programs.

Features

- Wipes Unused and Slack space to secure privacy and optimized use of memory
- Wipes specific drives, folders and files
- Wipes system activity traces to ensure privacy and improved system speed
- Wipes installed application traces and Internet activity traces
- Supports all the popular applications and Internet browsers

- Supports recognized standard overwriting algorithms for wiping
- A wipe list can be maintained containing the names of files and folders that can be wiped in a single step.
- Wiping can be scheduled at a preset date and time
- A log report is maintained in the application to review the process in future

What's New in This Version?

Wipe Now feature has been added in the latest version Stellar File Wipe 4.1. Wipe Now can be used to wipe selected drives, folders, and files of your system. Data of the selected files is permanently erased and can not be recovered by any means.

Installation Procedure

Before installing the software, check that your system meets the minimum system requirements:

■ Minimum System Requirements

Processor: Pentium Class

Operating System: Windows 2000/XP/2003/Vista/Windows 7

Memory: Minimum 1 GB


Hard Disc: 50 MB of Free Space

To install the software, follow these steps.

- Double-click **StellarFileWipe.exe** executable file to start installation. 'Setup - Stellar File Wipe' dialog box is displayed.
- Click **Next**. 'License Agreement' dialog box is displayed.
- Choose **I accept the agreement** option. 'Next' button will be enabled. Click **Next**. 'Select Destination Location' dialog box is displayed.
- Click **Browse** to select the destination path where the setup files will be stored. Click **Next**. 'Select Start Menu Folder' dialog box is displayed.
- Click **Browse** to provide path for program's shortcuts. Click **Next**. 'Select Additional Tasks' dialog box is displayed.
- Choose the check boxes as per your choice. Click **Next**. 'Ready to Install' dialog box is displayed.
- Review the entries. Click **Back** if you want to change them. Click **Install** to start installation. The Installing screen shows the installation process.
- After completing the process, 'Completing the Stellar File Wipe Setup Wizard' window is displayed. Click **Finish**.

How to Order?

The software can be purchased by making payments online. Please visit <http://www.stellarinfo.com/data-safety-eraser/wipe-professional/buy-now.php> for more information and to place an order.

Alternatively, if the demo version is installed then you can click the 'Buy Now' link in the 'Purchase' dialog box. Click 'Purchase' button  in the application tool bar to open Purchase dialog box.

How to Register?

The trial version of the Stellar File Wipe can be downloaded from the Stellar's web site. This trial version is just for evaluation purpose and must be eventually registered to use it after expiry. Software can be registered after receiving the key. To register the demo application, follow these steps.

- Start the trial version of the application.
- In the reminder option click Enter.
- Enter the user name and key, received by mail, after purchasing the software.
- A confirmation message is displayed if a valid key is entered.
- Click **OK**.

Or, you can also activate by **Activation** option in the tab pane.

- Run **Stellar File Wipe** application.
- Click **Settings** tab to expand the tab pane.




- Click **Activation** tab. Activation options are shown in the application window.

- Type the **User Name** and **Activation Code**.
- Click **Activate** button.
- A confirmation message is displayed if a valid key is entered.
- Click **OK**. **Stellar File Wipe** application is activated and the Activation tab is disabled.

How to Update?

There are periodical software updates provided by Stellar Information Systems Ltd. for Stellar File Wipe software. The software updates should be done to keep the software up-to-date. The updates can be a newly added functionality, a new feature, a new service or any other information that can be important for improvement. The Stellar File Wipe software can be updated over internet. To update the application, follow these steps.

- Click on Update  button in application tool bar. 'Update Wizard' dialog box is displayed.
- Click **Next**. A busy timer shows that updates are being searched. If it finds any new version, a message indicates the availability.
- If a message is displayed that no updates are available, Click **Cancel** to close the wizard.
- Click **Next**. The software will start downloading the update files from the server. When the process is complete, the software will upgrade to the latest version.

Features

Stellar File Wipe incorporates many useful features in it making it one of the best software available in the market. Easy to use graphical user interface, various options and categories for wiping, personalized list to wipe them in single step, a scheduler to run wipe on pre-specified list of items at a preset day and time are some of its features.

- Wipe Unused and Slack Space
- Wipes Internet/Application/System Traces
- Wipes Drives, Files and Folders
- Supports Maintenance of Wipe Lists
- Schedule Wipe Process
- Supported Wipe Algorithms
- System Traces Cleaned by Stellar File Wipe
- Supported Email & News Applications
- Supported Peer to Peer Applications
- Supported Microsoft Applications
- Supported Chat Messengers
- Other Supported Applications
- Log Report

Wipes Unused and Slack Space

File and folder deletion methods present in the operating systems just removes the pointer to the deleted file. The content is still present at its original place. Files deleted this way through operating system commands are easily recoverable using specialized applications.

Unused Space

Deleted files and folders are marked as unused space by the operating system. This space can be used for writing a new file. When ever a new file is written in the memory it searches for free space and overwrites the file marked as deleted. So, deleted files are actually present in the system until they are overwritten by any other file.

Wiping of unused space is necessary to maintain privacy while handing over the memory to anyone else. Stellar File Wipe wipes the unused space and overwrites the meaningful data with meaningless garbage data. Garbage data streams are created by using powerful supported wipe algorithms.

Slack Space

Whenever a file is written in the hard disk memory, it starts at beginning of a new cluster. Many times it happens that much space in a cluster is left unoccupied between end of a file and end of a cluster. Slack space can also be used as an evidence for existence of a file in the memory.

Wiping slack space ensures privacy of computer system.

Wipes Internet/Application/System Traces

All the events in the operating system mark their footprints. Whether it is Internet, any application or the operating system itself, all leave traces in the computer memory. These traces usually help in faster access of applications but eventually grow in number occupying much memory space. Traces can also act as a threat to privacy as they are a record of all the activities done by the user. All these left over traces are saved in the computer disk.

Stellar File Wipe easily wipes Internet traces and other leftovers by applications and system ensuring availability of space and maintaining privacy.

Wipes Drives, Files and Folders

When data is deleted from hard disk using operating system tools or commands, the data content is not entirely deleted. Data can be recovered by any recovery software. To wipe fully and securely, data and all its references should be deleted permanently.

Stellar File Wipe helps to wipe all the data contained in whole drive, folders or files simultaneously. Data files and folders once wiped cannot be recovered by any means. Only 'Zeroes' wipe algorithm is used by Stellar File Wipe in Wipe Now module.

Supports Maintenance of Wipe Lists

Add Wipe List is one of the many user-friendly features included in Stellar File Wipe software. Lists of files, folders, or drives can be created and stored. Lists are saved by names specified by user. Required lists from the saved lists can be selected and wiped by help of Stellar File Wipe application.

Schedule Wipe Process

Stellar File Wipe can be set to wipe the unused spaces, Junk or Internet traces at a time that is most convenient for user. Scheduled Tasks are executed at a time that is set by user in application. Time can be set for executing the application per day, per week, or on the preset date. The application gives options to schedule wiping tasks and time for the application.

Supported Wipe Algorithms

Stellar File Wipe overwrites the memory space with certain bit pattern for wiping. Overwriting standards, set by regulatory agencies, abide companies to follow certain standards. The standards that are recognized and followed by Stellar File Wipe software are:

- **Zeroes**
- **Pseudo-random**
- **Pseudo-random & Zeroes**
- **DoD 5220.22 - M(3 passes)**
- **DoD 5200.28 - STD(7 passes)**
- **Russian Standard - GOST**
- **B.Schneier's algorithm (7 passes)**
- **German Standard, VSITR (7 passes)**
- **Peter Gutmann, (35 passes)**
- **US Army AR 380-19 (3 passes)**
- **North Atlantic Treaty Organization - NATO Standard**
- **US Air Force, AFSSI 5020**

System Traces Cleaned by Stellar File Wipe

The following system traces will be cleaned by Stellar File Wipe application.

- Recycle Bin
- User Data
- Memory Dumps
- RSS Feed Cache
- Windows Defender
- CryptnetUrlCache
- Windows Error Report
- Map Network Drive MRU
- Recently Used Documents
- Windows Event Logs
- Windows User Assist MRUs
- Windows Swap/Paging files
- Windows Update Information
- Windows XP CD Burning folder
- Windows XP Unread Mail Count
- Find File Dialog Box Entries
- Windows Explorer Streams MRUs
- Registry Editor last opened key
- DirectX Most Recent Applications
- Find Computer Dialog Box Entries
- Past items from the notification area
- Saved Searched Folders from windows Vista

- List of Most Recently used files and folders
- List of Programs from start Menu>Run Command
- Microsoft Management Console Recent File List
- Temporary files created by program applications
- Start Menu Programs and Favorites menu order
- Custom locations from the picture location drop-down box

Supported Email & News Applications

The following E-mail and News applications are supported by Stellar File Wipe application.

- Windows Mail
- Outlook Express 6
- Mozilla Thunderbird
- Incredimail
- Eudora

Supported Peer to Peer Applications

The following Peer to Peer applications are supported by Stellar File Wipe application.

- Ares
- Azureus
- BearShare
- Bitcomet
- Bitspirit
- Blubster
- eDonkey
- eMule
- FrostWire
- Gnucleus
- Imesh
- Kazaa
- LimeWire
- Morpheus
- MP3Rocket
- Napster
- Shareaza
- SoulSeek
- uTorrent
- Warez
- Winmx

Supported Microsoft Applications

The following Microsoft applications are supported by Stellar File Wipe application.

- Microsoft Access
- Microsoft Clip Organizer
- Microsoft Excel
- Microsoft FrontPage
- Microsoft Management Console
- Microsoft Netmeeting
- Microsoft Office Document Imaging
- Microsoft Office Info Path
- Microsoft Office One Note
- Microsoft Office Picture Manager
- Microsoft Office Save My settings
- Microsoft Office Visio
- Microsoft PowerPoint
- Microsoft Publisher
- Microsoft Snapshot Viewer
- Microsoft Word
- Microsoft Wordpad
- Microsoft Windows Paint
- Windows DVD Maker
- Windows Media Player
- Windows Movie Maker
- Windows Photo Galary For VISTA

■ Microsoft Office Project

Supported Chat Messengers

The following Chat messengers are supported by Stellar File Wipe application.

- AOL Instant Messenger 6x/7x
- Google Talk
- MSN Messenger/Window Live Messenger
- Pidgin
- Skype
- Yahoo Messenger
- ICQ

Other Supported Applications

The following other applications are supported by Stellar File Wipe application.

- ACDSee Version 6.0
- ACDSee Version 7.0
- ACDSee Version 8.0
- ACDSee Version 9.0
- ACDSee Version 10.0
- ACDSee Version 11.0
- Acrobat Reader(6x/7x/8x/9x)
- Adobe Acrobat 5.0
- Adobe Acrobat 7.0
- Adobe Acrobat 9 pro
- Adobe Photoshop CS(8.0)
- Adobe Photoshop CS2(9.0)
- Adobe Photoshop CS3(10.0)
- Adobe Photoshop CS4(11.0)
- Adobe Photoshop Elements 6
- Adobe Photoshop Elements 7
- Adobe Photoshop Elements 8
- Adobe Photoshop Album Starter Edition 3
- Adobe Flash Player
- Audacity
- BSPlayer
- Corel Paint Shop Pro X

- Corel Paint Shop Pro XI
- Corel Paint Shop Pro X2
- Corel Paint Shop Pro X3
- CrossLoop
- Divx Player
- Download Accelerator
- ebay Toolbar
- Free Download Manager
- GetRight
- Google Desktop Search
- Google Toolbar For internet Explorer
- HP Photosmart Essential
- Irfan View
- J2SE Runtime Environment
- Micro
- MSN Toolbar and MSN Live Toolbar
- Musicmatch Jukebox
- Nero
- OpenOffice.org 2x
- Picasa
- Power DVD Player6/7
- Power DVD Player 8
- Power DVD Player 9
- Power DVD Player 10
- QuickTime 6x

- QuickTime 7.x with iTunes
- Real Player
- Roxio Easy Media Creator(8/9/10)Suite
- Snagit
- Speed Commander
- Tweakmaster Pro
- VideoLAN VLC Media Player
- WinAce
- Winamp 2/3/5
- WinRar
- ZoneAlarm

Supported Internet Browsers

The following Internet browsers are supported by Stellar File Wipe application.

- Internet Explorer
- Mozilla Firefox
- Netscape Navigator
- Safari
- Opera
- Google Chrome
- SeaMonkey
- MSN Explorer

Log Report

Log report helps to analyze the process and activities executed by user and the application. Stellar File Wipe saves a log report of all its activities as text. Default name of the log report is SFW_Log_Report.txt it is saved at the location where the program is installed.

All activities recorded since the application was installed are saved in same log report. To view log report,

- Click **Log View** tab in the application window.
- You can,
 - ⌘ Click **Save Log** to open saved log report.
 - ⌘ Click **Clear Log** to clear the content of saved log report. A confirmation dialog box confirms the deletion.
 - ⌘ Click **Cancel** to exit the window.

Wipe Unused Space

Unused spaces are memory spaces occupied by content of files deleted by user. This is because only the pointer to files is deleted by the 'Delete' and 'Shift-Delete' option provided by the system. To ensure full privacy and secure your content from falling into hands of people with malicious intention this space should be wiped. Stellar File Wipe software uses proven standard algorithms to wipe unused space.

To wipe unused space,

- Run **Stellar File Wipe** application.
- Click **Wipe Unused Space** tab.
- Select the Drive(s) to be wiped.



- Click **Select All Drives** to select all the drives.
- Click **Unselect All Drives** to deselect all the drives.
- Click **Set Wipe Algorithm** to choose a algorithm for wipe from the supported wipe algorithms.

■ In the **Wipe Options**,

- ⌘ Select **Wipe Deleted files and folders properties (name, date, size, etc...)** to wipe the properties of the file along with the file.
- ⌘ Select **Wipe System transaction log file (on NTFS drives only)** to wipe the log files saved in the system during transactions. Select this option if the drive has NTFS file system.

■ Click **Wipe Now** to start wipe process.

Wipe Slack Space

Slack space is the memory space trapped in memory clusters at the end of any file. With so many files saved in the hard disk, slack space grows in number to occupy large amount of space. Wiping slack space ensures privacy of computer system.

To wipe slack space,

- Run **Stellar File Wipe** application.
- Click **Wipe Slack Space** tab.
- Select the Drive(s) to be wiped.



- Click **Select All Drives** to select all the drives.
- Click **Unselect All Drives** to deselect all the drives.
- Click **Set Wipe Algorithm** to choose a algorithm for wipe from the supported wipe algorithms.
- In the **Wipe Options**,

☑ Select **Wipe System transaction log file (on NTFS drives only)** to wipe the log files saved in the system during transactions. Select this option if the drive has NTFS file system.

■ Click **Wipe Now** to start wipe process.

Wipe System Traces

Operating system creates temporary files while running. These files were required by the system at any point of time but are not deleted after the process is complete. These system traces occupy memory space and can compromise with the speed and performance of the operating system. Stellar File Wipe deletes all the traces improving the speed, performance and memory space of the computer.

To wipe system traces,

- Run **Stellar File Wipe** application.
- Click **System Traces** tab. A list of all the probable system traces is displayed in the application window by default. If the list is not displayed, click the root node of the list to display all the system traces.



- Check or uncheck the traces to select or deselect them for wiping. Check the **System Traces** root node to select all the traces.
- Click **Wipe Now** to start wipe process.

Wipe All the Traces of Selected Applications

Stellar File Wipe combines supported applications in groups to make their selection easy for wiping their traces. You can select application group(s) to remove all the trace and extraneous files, created by the all the applications belonging to that group.

To clear all the traces of selected application group(s),

- Run **Stellar File Wipe** application.
- Click Application Traces tab. Tab expands showing the application groups.



- Select the application in the application window, to wipe their traces.
 - ⌘ Click **Select All** to select all the applications.
 - ⌘ Click **Unselect All** to deselect all the applications.
- Click **Wipe** to start wipe process.



This wipe option should be used if the computer is shared with others.

Wipe Traces of Email & News Applications

Stellar File Wipe gives an option to precisely erase selected traces created by E-mail and News applications. A list of all the supported e-mail applications in the application group is shown for easy selection. Individual traces of specific applications can be selected for cleaning as per user preference.

To clear traces of selected E-mail and News applications,

- Run **Stellar File Wipe** application.
- Click Application Traces tab. Tab expands showing the application groups.



- Click Email & News Application tab. Application window displays the supported applications in tree view.
- Check or uncheck the supported applications to select or deselect them for wiping their traces. Check the **Email and News Application** root node to select all the applications under that node.
- Click on +/- sign to expand the tree. Check or Uncheck options under the application root node to select or deselect the individual traces.

- Click **Wipe** to start wipe process.



Close any running instance of the application for complete and effective wiping.

Wipe Traces of Peer to Peer Applications

Stellar File Wipe gives an option to precisely erase specific traces created by individual peer to peer applications. A list of all the supported peer to peer applications is shown for easy selection.

To clear traces of selected peer to peer applications,

- Run **Stellar File Wipe** application.
- Click Application Traces tab. Tab expands showing the application groups.



- Click **Peer to Peer Applications** tab. Application window displays the supported peer to peer applications in tree view.
- Check or uncheck the applications to select or deselect them for wiping their traces. Check the **Peer to Peer Applications** root node to select all the applications under the node.
- Click **Wipe** to start wipe process.



Close any running instance of the application for complete and effective wiping.

Wipe Traces of Microsoft Applications

Stellar File Wipe gives an option to precisely erase specific traces created by individual Microsoft applications. A list of all the supported Microsoft applications is shown for easy selection.

To clear traces of selected Microsoft applications,

- Run **Stellar File Wipe** application.
- Click Application Traces tab. Tab expands showing the application groups.



- Click Microsoft Applications tab. Application window displays the supported Microsoft applications in tree view.
- Check or uncheck the applications to select or deselect them for wiping their traces. Check the **Microsoft Applications** root node to select all the applications under the node.
- Click **Wipe** to start wipe process.



Close any running instance of the application for complete and effective wiping.

Wipe Traces of Chat Messengers

Stellar File Wipe gives an option to precisely erase selected traces saved by chat messengers. A list of all the supported chat messengers is shown for easy selection.

To clear traces of selected chat messengers,

- Run **Stellar File Wipe** application.
- Click Application Traces tab. Tab expands showing the application groups.



- Click **Chat Messengers** tab. Application window displays the supported chat messenger applications in tree view.
- Check or uncheck the applications to select or deselect them for wiping their traces. Check the **Chat Messengers** root node to select all the applications under the node.
- Click **Wipe** to start wipe process.



Close any running instance of the application for complete and effective wiping.

Wipe Traces of Other Applications

Stellar File Wipe gives an option to precisely erase selected traces created by individual applications. A list of all the supported applications in the application group is shown for easy selection. Individual traces can be selected for cleaning as per user choice.

To clear traces of supported applications,

- Run **Stellar File Wipe** application.
- Click Application Traces tab. Tab expands showing the application groups.



- Click **Other Applications** tab. Application window displays the supported applications in tree view.
- Check or uncheck the applications to select or deselect them for wiping their traces. Check the root nodes to select all the application under that node.
- Click on +/- sign to expand the tree. Check or Uncheck options under the application root node to select or deselect the individual traces of that application.
- Click **Wipe** to start wipe process.



Close any running instance of the application for complete and effective wiping.

Wipe Traces of All the Internet Activities of Selected Browsers

Stellar File Wipe combines Internet traces of supported Internet browsers in groups to easy their selection for wiping all their traces. You can select Internet browser(s) to remove all the traces and extraneous files created by that Internet browser.

To clear all the Internet Activities of selected Internet browser(s),

- Run **Stellar File Wipe** application.
- Click Internet Activities tab. Tab expands.



- Select the Internet browsers in the application window, to clear its activities.
 - ⌘ Click **Select All** to select all the applications.
 - ⌘ Click **Unselect All** to deselect all the applications.
- Click **Wipe** to start wipe process.

Wipe Traces of Selected Internet Activities of Selected Browsers

Stellar File Wipe gives an option to precisely erase selected traces, created by individual Internet browser. A list of all the traces is shown for easy selection. Individual traces can be selected for cleaning as per user choice.

To clear selected traces of selected Internet browsers,

- Run **Stellar File Wipe** application.
- Click Internet Activities tab. Tab expands showing the supported Internet browsers. Tabs of only installed Internet browsers are enabled.



- Click on the desired Internet browser, whose activities are to be wiped. Application window displays the supported Internet browser and the activities that will be erased in tree view.
- Check or uncheck the activities to select or deselect them to clear their activities. Check the root node to select all the activities.
- Click **Wipe** to start wipe process.

Wipe Selected Drive, Files and Folders

To wipe selected drive, files and folders,

- Run **Stellar File Wipe** application.
- Click **Wipe Now** tab. Drives and all the files and folders are shown as tree.
- Select the Drive(s) if full drive is to be wiped. Else, click on the nodes [+] to expand and navigate deeper to visit the required files or folders.



- Check/Uncheck the files or folders in the tree to select/deselect them for wiping.
- Click **Wipe Now** to start wipe process.



Only 'Zeroes' wipe algorithm is used by Stellar File Wipe in the **Wipe Now** module.

Manage a Wipe List

Many files and folders are known that they are extraneous files. They are not needed after some time, used only once, or are a threat to privacy or security. These known files and folders must be linked to a list so that they can be wiped in single step. Stellar File Wipe gives an option to create, remove, edit or save list of items and tasks that must be wiped from time to time in a single step.

Add Wipe List

Some files are known to user that they are threat to safety and privacy of the system. Stellar File Wipe gives an option to wipe a list of specified files or folders, present in the system. List of the wiped files and folders can be saved in the application for future reference.

To wipe the files and folders of a saved list, follow these steps.

- Run Application.
- Click **Add Wipe List** tab. All the saved lists are displayed in the application window.



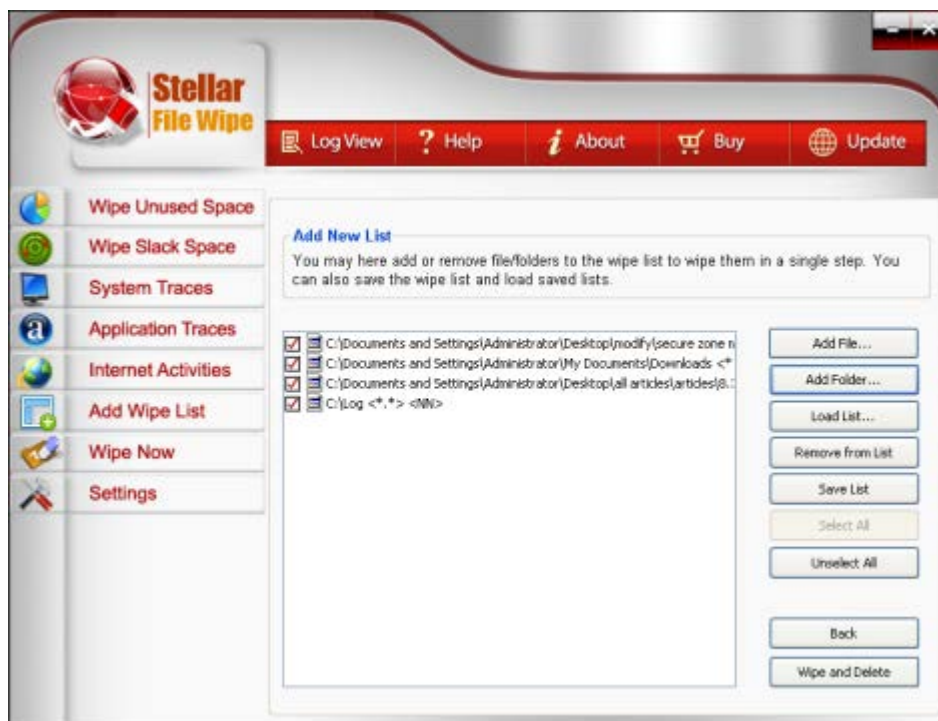
- Click Add New List to add new list of files and folders in the Wipe List.
- Select the list(s) that are to be wiped.
- To remove a list from the 'Wipe List', select the list under 'List Name' and click **Remove List**.
- To select all the lists for wiping, click **Select All**.
- To deselect all the lists in the Wipe list, click **Unselect All**.
- Click **Wipe List** to start wipe process.

Create a New List

You can create a list of files and folders that are threat to your privacy and security. Files and folders in the saved lists can be deleted in one single step.

To create a new list of files and folders,

- Run Application.
- Click **Add Wipe List** tab. All the saved lists are displayed in the application window.
- Click **Add Files** to add files in list. Open file(s) that are to be deleted. Selected files are added in list.



- Click **Add Folders** to add folder in list.

Click **Add Folder** button. A dialog box is displayed.



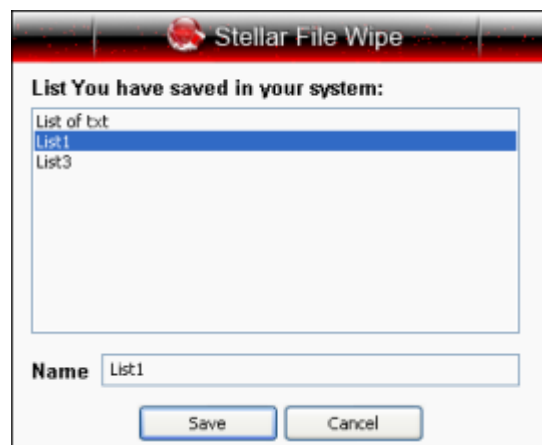
Click **Browse** button to select folder and all its content in **Browse for Folder** dialog box.

Type file types separated by semi-colons to exclude them from wipe.

Select **Wipe subfolders** to delete the subfolders after wipe.

Select **Delete Folder after wiping its content** to delete the folder after wiping content.

- Click **Load List** to load a saved list.



- You can also,

- ⚙ Click **Remove From List** to clear current list and start a new named list.
- ⚙ Click **Save List** to save current list.
- ⚙ Click **Select All** to select all items in current list.
- ⚙ Click **Unselect All** to unselect all items in current list.
- ⚙ Click **Back** to move back to **Add Wipe List** window.

- Click Wipe and Delete to start wiping the selected files and folders in the list.

Set Wipe Schedules

Stellar File Wipe gives an option to preset specific tasks to run at a predefined date and time. User can choose from a list of files and memory space to wipe in the application at a preset time.

To run application at specified time and set the scheduler,

- Run **Stellar File Wipe** application.
- Click **Settings** tab. Tab pane expands.
- Click **Set Scheduler** tab. 'Tasks' and 'Schedule' options are displayed.
- In **Tasks** frame,
 - ❏ Select the wipe activities that will be performed at the scheduled time. Click on root node to select or unselect all options in that node.
 - ❏ In **Wipe Unused Space** root folder, select the logical drive(s) that are to be wiped to clear unused space.
 - ❏ In **Wipe Slack Space** root folder, select the logical drive(s) that are to be wiped to clear slack space.
 - ❏ In **System Traces** root folder, select the traces that are to be wiped.
 - ❏ In the **Application Traces** root folder, select the applications groups to wipe all the traces created by any application in that group. You can expand the tree to choose the specific application to wipe any trace created by it.
 - ❏ In **Internet Activities** root folder, select the web browsers. Traces left by the selected browsers will be deleted. Click on the web browser root folder to expand the tree. Select the internet activities that you want to wipe at the scheduled time.
- In the **Frequency** frame of **Schedule** option,
 - ❏ Select **Once** to run application once.
 - ❏ Select **Every Day** to run application daily.
 - ❏ Select **Every Week** to run application every week.
 - ❏ Select **Every Month** to run application every month.

☑ Select **First boot of the Day** to run application when system is started for first time daily.

■ In the **Time Option** frame of **Schedule** option,

☑ Select Start Date of application. Application will start on this date.

☑ Select Start Time of application. Application will start at this time.

■ Click **Apply Schedule** to save the schedule settings.



Note: Each time a new schedule is set in Stellar File Wipe the previous one is deleted automatically.

Select Algorithm for Wipe

Stellar File Wipe gives a **Set Algorithm for Wipe** option that allows the user to choose from a range of wiping algorithms. The application gives two different options, **Disk Settings (Unused/Slack Space)** and **File Settings** that can be used for wiping Unused/Slack space and System/Application/Internet traces respectively.

To select the algorithm for wipe process,

- Run **Stellar File Wipe** application.
- Click **Settings** tab. Tab pane expands.
- Click **Set Algorithm For Wipe** tab. 'Disk Settings' and 'File Settings' options are displayed.
- To set algorithm for wiping Unused and Slack space,
 - ⌘ Select the wiping algorithm in the **Disk Settings (Unused/Slack Space)** section of application window.
- To set algorithm for wiping System Traces, Application Traces, or Internet Activities,
 - ⌘ Select the wiping algorithm in the **File Settings** section of application window.

Copyright

Stellar File Wipe software, accompanied user manual and documentation are copyright of Stellar Information Systems Ltd., with all rights reserved. Under the copyright laws, this user manual cannot be reproduced in any form without the prior written permission of Stellar Information Systems Ltd. No Patent Liability is assumed, however, with respect to the use of the information contained herein.

Copyright © 1995-2011 by Stellar Information Systems Ltd. INDIA

License Agreement

Stellar File Wipe

Copyright © 1995-2011 by Stellar Information Systems Ltd. INDIA

www.stellarinfo.com

All rights reserved.

All product names mentioned herein are the trademarks of their respective owners.

This license applies to the standard-licensed version of Stellar File Wipe.

Your Agreement to this License

You should carefully read the following terms and conditions before using, installing or distributing this software, unless you have a different license agreement signed by Stellar Information Systems Ltd.

If you do not agree to all of the terms and conditions of this License then do not copy, install, distribute or use any copy of Stellar File Wipe with which this License is included, you may return the complete package unused without requesting an activation key within 30 days after purchase for a full refund of your payment.

The terms and conditions of this License describe the permitted use and users of each Licensed Copy of Stellar File Wipe. For purposes of this License, if you have a valid single-user license, you have the right to use a single Licensed Copy of Stellar File Wipe. If you or your organization has a valid multi-user license, then you or your organization has the right to use up to a number of Licensed Copies of Stellar File Wipe equal to the number of copies indicated in the documents issued by Stellar when granting the license.

Scope of License

Each Licensed Copy of Stellar File Wipe may either be used by a single person or used non-simultaneously by multiple people who use the software personally installed on a single workstation. This is not a concurrent use license.

All rights of any kind in Stellar File Wipe, which are not expressly granted in this license, are entirely and exclusively reserved to and by Stellar Information Systems Ltd. You may not rent, lease, modify, translate, reverse engineer, decompile, disassemble or create derivative works based on Stellar File Wipe nor permit anyone else to do so. You may not make access to

Stellar File Wipe available to others in connection with a service bureau, application service provider or similar business nor permit anyone else to do so.

Warranty Disclaimers and Liability Limitations

Stellar File Wipe and all accompanying software, files, data and materials are distributed and provided AS IS and with no warranties of any kind, whether expressed or implied. You acknowledge that good data processing procedure dictates that any program including Stellar File Wipe must be thoroughly tested with non-critical data before there is any reliance on it and you hereby assume the entire risk of all use of the copies of Stellar File Wipe covered by this License. This disclaimer of warranty constitutes an essential part of this License. In addition, in no event does Stellar authorize you or anyone else to use Stellar File Wipe in applications or systems where its failure to perform can reasonably be expected to result in a significant physical injury or in loss of life. Any such use is entirely at your own risk and you agree to hold Stellar harmless from any and all claims or losses relating to such unauthorized use.

In no event shall Stellar Information Systems Limited or its suppliers be liable for any special, incidental, indirect, or consequential damages whatsoever (including, without limitation, damages for loss of business profits, business interruption, loss of business information, or any other pecuniary loss) arising out of the use of or inability to use the software product or the provision of or failure to provide support services, even if Stellar Information Systems Limited has been advised of the possibility of such damages. In any case, Stellar Information Systems Limited's entire liability under any provision shall be limited to the amount actually paid by you for the software product.

General

This License is the complete statement of the agreement between the parties on the subject matter and merges and supersedes all other or prior understandings, purchase orders, agreements and arrangements. This License shall be governed by the laws of the State of Delhi, India. Exclusive jurisdiction and venue for all matters relating to this License shall be in courts and fora located in the State of Delhi, India and you consent to such jurisdiction and venue. There are no third party beneficiaries of any promises, obligations or representations made by Stellar herein. Any waiver by Stellar of any violation of this License by you shall not constitute nor contribute to a waiver by Stellar of any other or future violation of the same provision or any other provision of this License.

Copyright © 1995-2011 by Stellar Information Systems Ltd. All rights reserved.

Trademarks

Stellar File Wipe® is a registered trademark of Stellar Information Systems Ltd.

Windows 2000 Server®, Windows XP®, Windows 2003®, Windows Vista®, Windows 7®, MS Office, MS Outlook are registered trademarks of Microsoft® Corporation Inc.

All Trademarks Acknowledged.

All other brands and product names are trademarks or registered trademarks of their respective companies.

Disclaimer

The Information contained in this manual, including but not limited to any product specifications, is subject to change without notice.

STELLAR INFORMATION SYSTEMS LTD PROVIDES NO WARRANTY WITH REGARD TO THIS MANUAL OR ANY OTHER INFORMATION CONTAINED HEREIN AND HEREBY EXPRESSLY DISCLAIMS ANY IMPLIED WARRANTIES OF MERCHANTABILITY OR FITNESS FOR ANY PARTICULAR PURPOSE WITH REGARD TO ANY OF THE FOREGOING STELLAR INFORMATION SYSTEMS LTD ASSUMES NO LIABILITY FOR ANY DAMAGES INCURRED DIRECTLY OR INDIRECTLY FROM ANY TECHNICAL OR TYPOGRAPHICAL ERRORS OR OMISSIONS CONTAINED HEREIN OR FOR DISCREPANCIES BETWEEN THE PRODUCT AND THE MANUAL. IN NO EVENT SHALL STELLAR INFORMATION SYSTEMS LTD., BE LIABLE FOR ANY INCIDENTAL, CONSEQUENTIAL SPECIAL, OR EXEMPLARY DAMAGES, WHETHER BASED ON TORT, CONTRACT OR OTHERWISE, ARISING OUT OF OR IN CONNECTION WITH THIS MANUAL OR ANY OTHER INFORMATION CONTAINED HEREIN OR THE USE THEREOF.

Technical Support

Our Technical Support professionals will give solutions for all your queries related to Stellar Products.

You can either Call Us or Go Online to our support section <http://stellarinfo.com/support>

Support Helpline

Monday to Friday [24 Hrs. a day]

USA (Tollfree- Pre Sales Queries)	+1-877-778-6087
USA (Post Sales Queries)	+1-732-584-2700
UK (Europe)	+44-203-026-5337
Australia & Asia Pacific	+61-280149899
Netherlands Pre & Post Sales Support	+31-208-111-188
Worldwide	+91-921-395-5509
Skype Id	stellarsupport
Email Orders	orders@stellarinfo.com

Online Help

- Chat Live with an Online technician
- Search in our extensive Knowledge Base
- Submit Enquiry (If our Knowledge Base does not answer your question)

About Stellar

Stellar Information Systems Ltd. is a trusted name in the field of Data Recovery and Data Protection Software for more than a decade.

We provide the widest range of Data Recovery Products. Our range includes Data Recovery Software for almost all Operating Systems and File Systems.

Product line:

Data Recovery

A widest range of data recovery software that helps you recover your valued data lost after accidental format, virus problems, software malfunction, file/directory deletion, or even sabotage!.

More Info >>

File Recovery

The most comprehensive range of file undelete and unerase software for Windows and MS office repair tools. More Info >>

E-mail Recovery

A wide range of mail recovery, mail repair and mail conversion applications for MS Outlook, MS Outlook Express and MS Exchange useful in instances of data loss due to damages and corruption of E-mail. More Info >>

Data Protection

A wide range of Prevent Data Loss, Data backup and Hard Drive Monitoring Applications to ensure complete data protection against hard drive crash. More Info >>

Data Sanitization

Data cleanup and file eraser utility can delete selected folders, groups of files, entire logical drives, System Traces & Internet traces. Once the data have been removed using Stellar Wipe - Data File eraser utility, it is beyond recovery limits of any Data Recovery Software or utility. More Info >>

For more information about us, please visit www.stellarinfo.com

FAQs

1. What is use of Stellar File Wipe?

Stellar File Wipe application can be used to wipe unused space, slack space, and all the traces created by system, application and internet. Any specific file or a list of files and folders can also be wiped using the software. Moreover, you can schedule your desired wipe activities to run at a preset time and date.

2. I want to wipe primary partition of my hard disk for unused space. Is it safe to use Stellar File Wipe application for that?

Yes, it is safe and recommended to wipe your primary partition to ensure privacy and optimized performance. As most of the downloaded items and installed programs are present in the primary partition it should be wiped on regular basis.

3. Can I wipe specific files using the application?

Yes, you can wipe specific files using **Stellar File Wipe**. To wipe a single file,

- Run **Stellar File Wipe** Application.
- Click **Add Wipe List** tab. All the saved lists are displayed in the application window.
- Click Add New List button to add new list of files and folders in the Wipe List.
- Select the list(s) that are to be wiped.
- To remove a list from the 'Wipe List', select the list under 'List Name' and click **Remove List**.
- To select all the lists for wiping, click **Select All**.
- To deselect all the lists in the Wipe list, click **Unselect All**.
- Click **Wipe List** to start wipe process.

You can also use Wipe Now feature of **Stellar File Wipe** to wipe specific files.

- Run **Stellar File Wipe** application.
- Click **Wipe Now** tab. Drives and all the files and folders are shown as tree.

- Click on the nodes [+] to expand and navigate deeper to visit the required files or folders.
- Check/Uncheck the files or folders in the tree to select/deselect them for wiping.
- Click **Wipe Now** to start wipe process.

4. How to choose the algorithms for wipe? Which one is the best?

To choose the wipe algorithm,

- Run **Stellar File Wipe** application.
- Click **Settings** tab. Tab pane expands.
- Click **Set Algorithm For Wipe** tab. Select the algorithm as per your choice.

Each algorithm has its own features and specialties. Select the one which is suitable to you.

5. I don't want to clear all my Internet activities. How can I do that?

Yes, you can delete specific internet traces. To learn more, visit [Wipe Traces of Selected Internet Activities of Selected Browsers](#) topic of this help.

6. What is slack space? Can I know how much slack space will be wiped before wiping?

When a file is saved a lot of space is left as slack at end of the file. This slack space can be a threat to user's privacy, as the content can be recovered or analyzed by simple data recovery tools available. Stellar File Wipe ensures full privacy by wiping the slack space by help of strong algorithms.

No, you can not see how much slack space will be wiped.

7. Can I set multiple schedules for the same day like, one at 9.00 A.M. and another at 4.00 P.M.?

No, this feature is not currently available in the software.

8. How to delete files and folders present in the system permanently?

You can delete files and folders permanently using the Wipe Now feature of Stellar File Wipe. Follow the underlying steps to wipe files and folders.

- Run **Stellar File Wipe** application.

- Click **Wipe Now** tab. Drives and all the files and folders are shown as tree.
- Select the Drive(s) if full drive is to be wiped. Else, click on the nodes [+] to expand and navigate deeper to visit the required files or folders.
- Check/Uncheck the files or folders in the tree to select/deselect them for wiping.
- Click **Wipe Now** to start wipe process.