



Stellar Phoenix Linux Data Recovery

Version 4.0

User Guide

Overview

Stellar Phoenix Linux Data Recovery is a complete solution to recover data from ext2, ext3, ext4 and File Allocation Table (FAT) volumes. This software is supported on Microsoft Windows Operating Systems (OSs).

Stellar Phoenix Linux Data Recovery provides recovery of data from deleted volumes. Data that is deleted from volumes can also be recovered by using this software. In addition, you can search volumes that were created earlier and deleted to create new volumes. Data can be recovered from these volumes too.

Stellar Phoenix Linux Data Recovery allows you to resume recovery at any time by using image (.img) file. Two types of image file can be used - scan information file and image of hard disk or volume.

You can view status of hard disk and create image of hard disk. Also, image of volumes can also be created by using this software. You can save images and can recover data from them at any time. In addition, you can also create an exact replica of hard disk by using cloning feature of Stellar Phoenix Linux Data Recovery.



Key Features of Stellar Phoenix Linux Data Recovery:

- Recovery of data from ext2, ext3 and ext4 volumes
- Recovery of data from FAT12 / FAT16 / FAT32
- Recovery of deleted data
- Recovery of data from volumes that are no longer exist in hard disk
- Restart recovering data by using image files
- Cloning of hard disk
- Image creation of hard disk or volume, in addition, image of selected region of hard disk or volume
- View statistics of hard disk

Stellar Phoenix Update Wizard

The Stellar Phoenix Update Wizard keep your Stellar Phoenix applications updated. Update option in the application is capable of checking the latest updates. This will check for both latest minor and major version available online. You can easily download minor version through the update wizard. However, the major version available has to be purchased. While updating the software, it's recommended to close all the running programs.

To start Stellar Phoenix Update Wizard:

1. In the Stellar Phoenix Linux Data Recovery main screen, Click  icon. Under General Settings tab, click  button.
2. Stellar Phoenix Update Wizard window pops up. Click **Next** to proceed.
3. The wizard will start searching for the latest updates and if it finds any new version, a window pops up indicating the availability.
4. Click **Next**, the software will start downloading the update files from the server. When the process is complete, the software will upgrade to the latest version.

Live Update may not happen due to following reasons:

- Internet connection is not available
- There are no updates available from the update site



Note: If major version is available, to upgrade the software you have to purchase it.

Getting Started

Stellar Phoenix Linux Data Recovery provides you many features that helps you in recovering data from volumes or hard disk. You can also configure general settings of the Stellar Phoenix Linux Data Recovery software. Settings such as whether to show or not 'Tip of the day' at software startup, check for latest updates can be configured.

- [Installation procedure](#)
- [Configuring settings](#)
- [File types](#)
- [Order and Register](#)

Installation Procedure

Before installing the software, ensure that your system meets the minimum system requirements:

Minimum System Requirements:

- **Processor:** Pentium Class
- **RAM:** 256 MB minimum (512 MB recommended)
- **Free space on hard disk:** 30 MB
- **Operating Systems (OSs):** Windows 2000/2003/XP/Vista

To install the software:

1. Double-click **Stellar Phoenix Linux Data Recovery-Setup.exe** file to start the setup process. The Setup - Stellar Phoenix Linux Data Recovery dialog box opens. Click **Next**.
2. In the License Agreement screen, select **I accept the agreement** option. The Next button will be enabled. Click **Next**.
3. In the Select Additional Tasks screen, check the required check boxes. Click **Next**.
4. In the Select Destination Location screen, provide the path by using Browse button where the setup files will be stored. Click **Next**.
5. In the Start Menu Folder screen, provide the path by using Browse button where the program's shortcuts will be stored. Click **Next**.
6. In the Ready to Install screen, review the settings. Click **Back** to change settings. After confirming the settings click **Install**. The Installing screen shows the installation process.
7. After completing the process, the Completing the Stellar Phoenix Linux Data Recovery Setup Wizard screen opens. Click **Finish**.

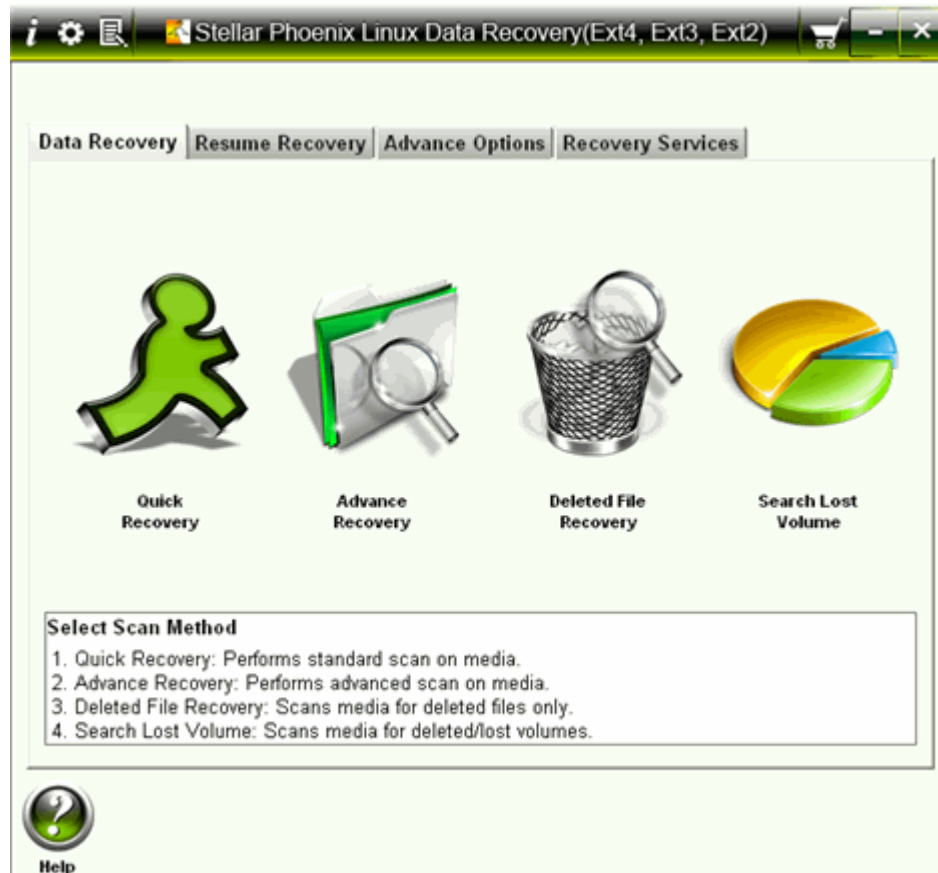


Note: You can clear the Launch Stellar Phoenix Linux Data Recovery check box to stop the automatic launch of the software.

User Interface

Stellar Phoenix Linux Data Recovery software has a very easy to use rich Graphical User Interface. Both, technical and non-technical users can use the software easily.

Stellar Phoenix Linux Data Recovery software's main user interface is as shown below.



- **Data Recovery Tab**

This includes four scanning methods: [Quick Recovery](#), [Advance Recovery](#), [Deleted File Recovery](#), [Search Lost Volume](#). You can select any one of the method as per your requirement.

- **Resume Recovery Tab**

This allows you to [resume recovery](#) by using image file, which is created by using create image feature of Stellar Phoenix Linux Data Recovery. You can use scan information file or an image file to restart recovery.

- **Advance Options Tab**

Stellar Phoenix Linux Data Recovery

This provides you features such as [Drive Imaging](#) and [Drive Status](#). You can create image of hard disk or volume and create an exact replica of hard disk by using Drive Imaging feature. You can also view the status of hard disk by using Disk Status feature.

- **Recovery Services Tab**

Provides information about the [data recovery services](#) provided by Stellar Information Systems Ltd.

Configuring Settings

You can configure general settings of the Stellar Phoenix Linux Data Recovery Software. You can configure settings such as whether the Tip of the day will be shown when software starts or not, log settings.


You can add, edit or remove file types in Stellar Phoenix Linux Data Recovery software file types list.

In addition you can activate the software by using Manual Activation tab under Settings box.

- Click [General Settings](#) tab to configure general options.
- Click **Add File Types** tab to [add](#), [remove](#), or [edit](#) file type. This will become the default settings. However, you can change file types settings as per your requirement during raw recovery.
- Click **Manual Activation** tab to register the software manually. You will need to enter the site key which is received after purchase of software. For more information click [here](#).

General Settings

To configure general settings of Stellar Phoenix Linux Data Recovery:

- In the Stellar Phoenix Linux Data Recovery screen, click  . Under General Settings tab, configure general options:
 - **Disk Temperature:** select either Fahrenheit or Celsius. The disk temperature will be shown in the selected unit when you view the [drive Status](#).
 - **Show 'Tip of the Day' checkbox:** check this checkbox to view tip at software startup
 - **Check for 'Latest Updates' at startup:** check this checkbox to receive latest updates for the software
 - **Log Settings:** check the **Save log before closing application** checkbox to automatically save log of processes. Click **Browse** to specify the destination where log files should be saved.
 - **Scan Settings:** Use arrows to increase or decrease the number of read attempts. Scanning process will try to scan the hard disk up to the number of attempts specified in this box.
 - **Language:** Click **Set interface language** listbox to set the language of software.

File Types

Stellar Phoenix Linux Data Recovery includes several file types that are searched during scanning processes. Files listed in the File Types list are always searched when you start any scanning process.


You can select file types from the list of File Types. In addition, you can add new file type, edit an existing file type and remove a file type.

- [Selecting file types](#)
- [Adding new file type](#)
- [Editing an existing file type](#)
- [Removing a file type](#)

Adding File Type

You can add file type to the list of File Types such that scanning process should search for all file types listed in the File Types list. In case, the file you are searching is not available in the file list you can add the file by specifying the software name, size, header information, and file extension.

To add a file type:

1. In the Stellar Phoenix Linux Data Recovery screen, click  icon, under **Add File Type** tab, click **Append Header File**.
2. In the Add New Header screen, click **Add**.
3. In the Add/Edit Header File screen, provide the values:
 - **Software Name:** Type name of the software or file
 - **Group:** Select the group under which new file type will be included.
 - **File Extension:** Type the file extension
 - **Max File Size:** Specify the size of file such that the preview of file can be available. If you specify a very small size then the preview of the file may not be available.
 - **Header (in hexadecimal):** Type the header value
 - **At Offset (in decimal):** Type the offset value
4. Click **OK**.

Editing File Type

You can also edit an existing file type or newly added file type. You can change every setting of file type.

To edit a file type:

1. Select the file type that needs to be edited.
2. Click **Edit**. In the Add/Edit Header File screen, edit values:
 - **Software Name:** Type name of the software or file
 - **Group:** Select the group under which new file type will be included.
 - **File Extension:** Type the file extension
 - **Max File Size:** Specify the size of file such that the preview of file can be available. If you specify a very small size then the preview of the file may not be available.
 - **Header (in hexadecimal):** Type the header value
 - **At Offset (in decimal):** Type the offset value
3. Click **OK**.




Note: You can also edit a file type from Add New Header screen.

Selecting File Type

File types give information about the type of file such as video, audio and its extension. You can select file types while performing raw recovery such that, scanning process should search for the specified file types.

File types are listed in the File List screen. The Software Name column shows the type of file, File extension shows the extension of the file type and size (KB) shows the size of file type. The file types is categorized according to groups with 'All' as the main group that includes every file type, which is available in different file groups. Different groups are Graphic, Pictures & Raster Images, Archive, Audio, video & Animation, Mails, Database, Office Documents, Internet, and Miscellaneous.

To select file types from file list:

1. In the Stellar Phoenix Linux Data Recovery screen, click  icon, under **Add File Type** all existing files types are listed.

2. In the Settings screen, select the required file types

- **To include all groups and file types**

Click the Filter by file group list box, select **All**, and then click **OK**.

- **To include a single group**

In the File List screen, click the Filter by file group list box and select All. Click **Unselect All**, select the required group from Filter by file group list box, and then click **Select All** to add all file types of that group. Click **OK**.

- **To include selected file types**

In the File List screen, click the **Filter by file group** list box and select **All**. Check the software name checkboxes of the required files types and clear the software name checkboxes that are not required. Click **OK**.

- **To exclude a group**

In the File List screen, click the **Filter by file group** list box and select the group that needs to be removed. Click **Unselect All**, and then click **OK**. Similarly, you can exclude multiple groups.

- **To include multiple groups with selected file types**

You can include more than one group and selected file types from them. First select a group from **Filter by file group** list box, and then select required file types from the selected group. Similarly, select another group


Stellar Phoenix Linux Data Recovery

from Filter by file group list box and select required file types. After selecting the required groups and file types, click **OK**.

Removing File Type


You can remove user-defined file types. You cannot remove file types that are embedded in the software. You can remove file type from Add New Header screen.

To remove file type:

1. In the Stellar Phoenix Linux Data Recovery screen, click  icon, under **Add File Types** tab, click **Append Header File**.
2. In the Add New Header screen, select a file type and click **Remove**. Repeat the procedure to remove more file types.

Manual Activation Tab

You can also register the software by clicking Manual Activation tab under Settings box. In

the Stellar Phoenix Linux Data Recovery screen, click  icon, in the Settings screen, click **Manual Activation** tab. Type the site key, received after successful purchase of the software, in the Enter Site Key textbox and click **Validate**. For more information view [manual activation](#) topic.

Order and Register


To know how to order and register:

- [How to Order?](#)
- [How to Register?](#)

How to Order

The software can be purchased by making payments online using a credit card. Please visit <http://www.stellarinfo.com/linux-data-recovery.htm> for more information and to place an order.

Alternatively, if the demo version is installed then you can register the demo version. To


register the demo version click **About** icon , click **Register** button to start the [registration process](#).

Once the registration is complete, an activation serial number along with activation details is sent through email. This activation serial number is required to register the software.

How to Register?

Notes:

If the software is downloaded from <http://www.stellarinfo.com/disk-recovery-prices-linux.htm?Order> (i.e., ESD version), for the full functionality, the product must be registered using Serial Number (received through email after purchasing the product).

If the software is installed using the product installation CD (i.e., BOX version), hardware lock[] is mandatory for the functioning of the software which is available with the software kit.

After purchasing the software, you will receive the serial number, which is required to register the software. The serial number will be verified during the registration process and if the serial number is valid then the software will be registered.

The software can be registered in different ways. These are the methods by using which you can register the software:

- [Over internet](#)

You should have the serial number, which is received after purchase of the software. On entering the serial number it is verified by license server and on verification the software will be registered.

- [Manual Activation](#)


You will need to generate a PHX_REG.txt file and mail the .txt file to support@stellarinfo.com. After verifying the serial number and purchase details of the software, the site key will be delivered to you at your email address. This site key is used to register the software manually.

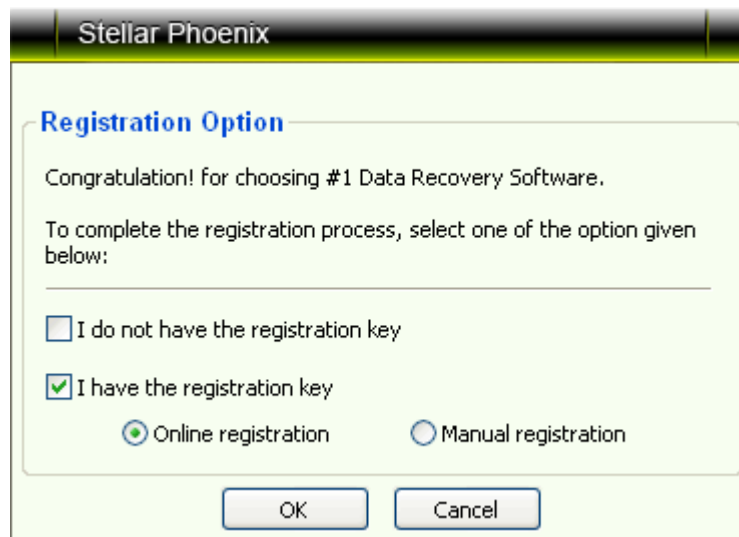
- [Using Email](#)

If the registration of the software by using Online Registration or Manual Activation is not successful then you can still register the software by using email. An email will be send to online-register@stellarinfo.com either automatically or manually by the Stellar Phoenix - Electronic Software Registration wizard. The software will be registered automatically, when Internet connection is available on your computer.

Registration Over Internet

To register the software over Internet:

1. Click **About**  icon , click **Register** button. The Stellar Phoenix dialog box opens, check the **I have the registration key** checkbox and select **Online registration** option. Click **OK**, and then click **Yes**.



2. In the Welcome to Stellar Phoenix - Electronic Software Registration wizard, click **Next**.
3. Type the Serial number (received through email after purchasing the product) in the Serial number text box. Click **Next**.

Stellar Phoenix Linux Data Recovery



4. The software would automatically communicate with license server and register the software. Click **Finish** to complete the registration process.

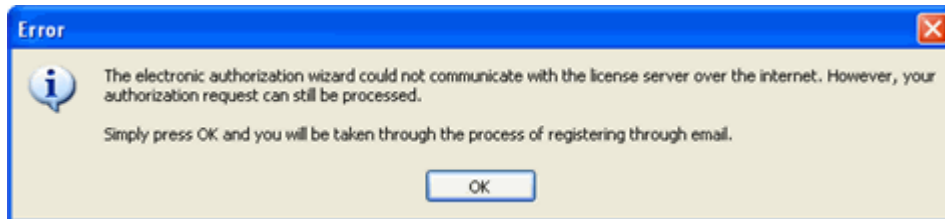
Notes:

- If online activation is failed then you can send the serial number, which is received after purchase of the software, to support@stellarinfo.com for registering the software by using manual activation.
 - If you do not have the key, check the **I do not have the registration key** checkbox to purchase the software and receiving the registration key.
-

Registration by using Email

To register the software by using email

While activating the product over Internet, if the software could not communicate with the server, an error message shown below will popup.

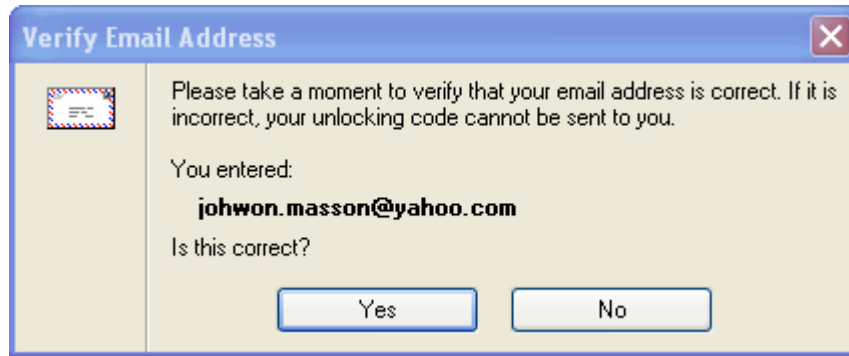


1. Click **OK**, to register through email. The Stellar Phoenix - Electronic Registration Wizard for sending the authorization request will appear.
2. Leave the checkbox **Manually send email** clear and click **Next** to continue.
3. Type your email address in the textbox. The unlocking code will be sent to this email address. Click **Next**.

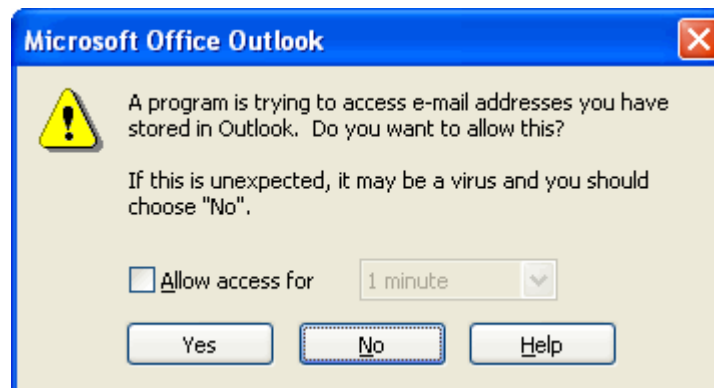


4. In the Verify Email Address screen, verify the email address you have entered and click **Yes**.

Stellar Phoenix Linux Data Recovery

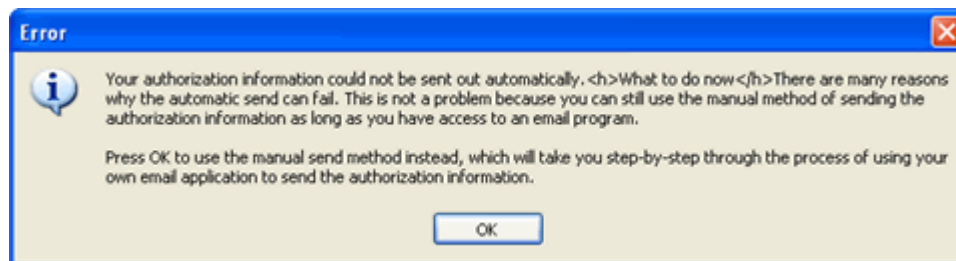


5. If your email client is blocking the process the following dialog box appears, it depends on your email client here Microsoft Outlook example is given. Click **Yes**, and then click **Finish**.



The software automatically launches the default email client, and sends an email containing your unique site code with registration request to the registration server.

If the registration wizard could not launch the default email client, following message will appear.



Click **OK**, to continue the process manually.

1. Open your email client (like Outlook Express, MS outlook, Eudora etc) and create a new message.
2. Place the cursor in the box labeled **To** and press **CTRL+V** to paste address. If it does not work, right click on the **To** box and select **Paste** from the popup menu. The To box will contain the **online-register@stellarinfo.com** address. Click **Next**.


Registration by using Email

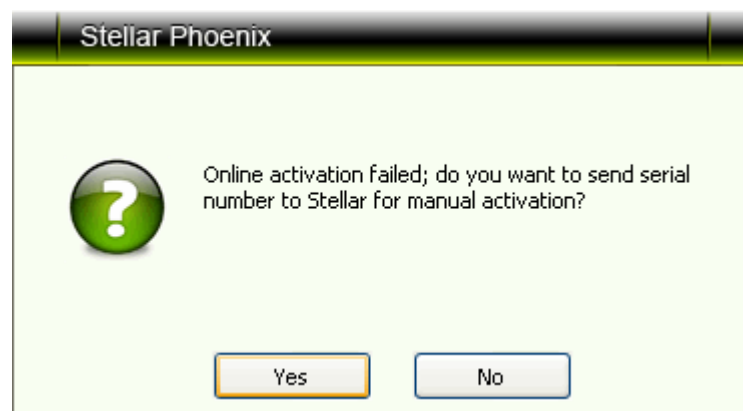
3. Place the cursor in the Subject box in the same message window and paste (method same as above) the text. The Subject box will contain the **Registration Request** text. Click **Next**, do the same process mentioned above to paste the encrypted text content in the body of the message.
4. Click **Next** to finish the procedure. After clicking **Finish**, click **send** button in your email client to send the email.

After processing your email, registration server would send you an email containing unlocking code/site-key.

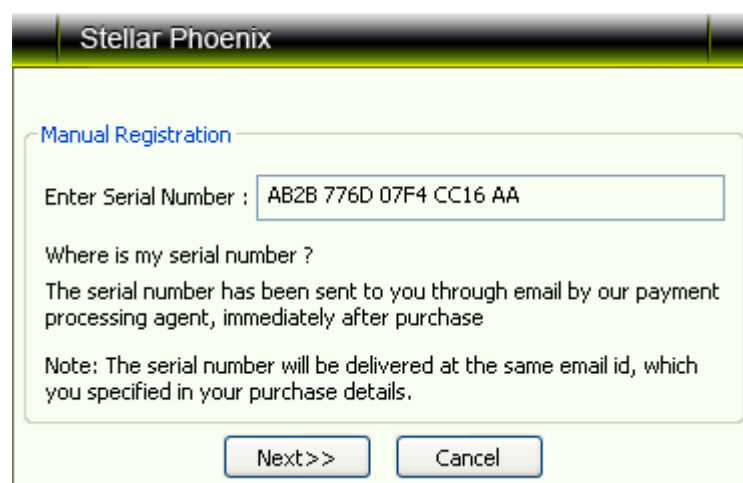
Manual Activation

To register the software by using manual activation process:

1. Click **About**  icon , click **Register** button. The Stellar Phoenix dialog box opens, check the **I have the registration key** checkbox and select **Online registration** option. Click **OK**, and then click **Yes**.
2. In the Welcome to Stellar Phoenix - Electronic Software Registration Wizard, click **Cancel**. In the Stellar Phoenix dialog box, click **Yes**.




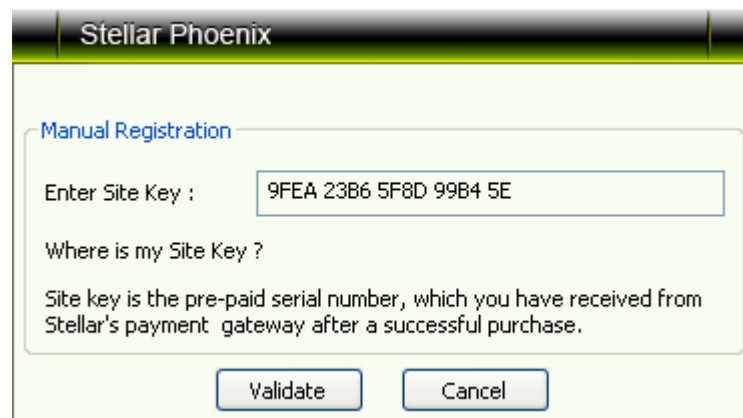
3. In the Manual Registration screen, enter the serial number that is received after the purchase of the software. Click **Next**.



4. A PHX_REG.txt file will be created on desktop. Email the text file to the email support@stellarinfo.com address. You can click the link given in the screen to start to automatically compose the email for the given email address. Click **Finished**.

Stellar Phoenix Linux Data Recovery

5. After verifying the purchase details, you will receive the site key that is required to register the software by using manual activation.
6. When you receive the site key, open Stellar Phoenix Linux Recovery, Click  icon, click **Register** button. The Stellar Phoenix dialog box opens, check the **I have the registration key** checkbox and select **Manual Registration** option. Click **OK**.
7. In the Manual Registration screen, type the **site key**, which is received after sending the PHX_REG.txt file. Click **Validate** to register the software.



The screenshot shows a dialog box titled "Stellar Phoenix" with a "Manual Registration" section. It contains a text input field for the "Enter Site Key" with the value "9FEA 23B6 5F8D 99B4 5E". Below the input field is a question "Where is my Site Key ?" followed by a paragraph of explanatory text: "Site key is the pre-paid serial number, which you have received from Stellar's payment gateway after a successful purchase." At the bottom of the dialog box are two buttons: "Validate" and "Cancel".

Supported File Types for Preview

Stellar Phoenix Linux Data Recovery software supports preview of file types listed below. This helps user to verify the file(s) before actual recovery.

Acrobat files

- PDF

Archive files

- ARJ, LZH, ALZ, TAR, ZIP, RAR, CAB

Audio Video files

- RMI, WAV, WMV, MPG, WMV, WMA, MIDI, AU, MP3, AVI, ASF, MPEG, MID

Backup files

- BKF

Database files

- MDF, DBF, CSV

Image Files:

- BMP, WBMP, WMF, EMF, JPEG, JPG, JPE, J2K, JP2, JBG, J2C, JPC, PNG, MNG, JNG, JFIF, DIB, GIF, TIF, TIFF, TGA, PCX, PGX, PNM, PGM, PPM, RAS, X3F, PEF, NEF, KDC, K25, ERF, DNG

Internet files

- HTM, HTML, SHTML, SHTM, MHTML, XHTML, XHT, PLG

Miscellaneous files

- C, PRG, TEXT, CXX, HPP, XML, CC, HH, ASM, JS, PHP, ASP, LIC, DEF, CS PROJ, VC PROJ, SLN, CSS, DSP, DSW, CS, JAVA, INF, INI, LOG, CGI, JSP, REG, FRM, TXT, CPP, H, BAT

Office documents

- DOC, DOT, DOCX, DOTX, XLS, XLT, XLW, XLB, XLSX, XLTX, PPT, PPS, POT, PPTX, PPSX, POTX, RTF



Notes:

- File types that are not supported for preview are shown in the hex viewer.
 - Preview of severely corrupted files is shown in the hex viewer.
-

Using the Software

Stellar Phoenix Linux Data Recovery is a very easy to use data recovery software with many features. Anyone can use this software without any prior technical knowledge.

Stellar Phoenix Linux Data Recovery helps you to recover data from ext2, ext3, ext4 and FAT volumes. You can create image of volumes and hard disks. You can create an exact replica of hard disk. You can restart recovery from last saved point by using scan information file and image file at any time.

In addition, features such as mask, drive status, scan disk helps you to recover data easily and efficiently.

- [Quick recovery](#)
- [Advance recovery](#)
- [Deleted file recovery](#)
- [Searching lost volume](#)
- [Resuming recovery](#)
- [Advance options](#)

Recovering Data

Select a recovery option to start recovering data.

- **Quick Recovery:** Quick Recovery option performs a quick scan on the selected FAT, ext2, ext3 and ext4 volumes. You can select only one volume at a time for quick scan. This scan method is fast and efficient. You will find almost all data by performing a quick recovery on the selected volume.
- **Advance Recovery:** Advance recovery option performs an extensive search on the selected volume. Advance recovery option is slow but more efficient in searching lost, corrupted or deleted data.
- **Deleted File Recovery:** Use this recovery option to recover files that are deleted from a volume. Only deleted files can be recovered by using this recovery option.
- **Search Lost Volume:** Use this recovery option to recover data from lost or deleted volumes of a hard disk. If you have deleted volumes from hard disk and want to recover data from those volume then use this option to search for lost volumes. After finding the lost volume you can recover data by any of the above three recovery option.

Quick Recovery

Quick Recovery option of Stellar Phoenix Linux Data Recovery software performs a quick scan on the selected , ext2, ext3, ext4 and FAT volumes. You can select only one volume at a time for quick scan. This scan method is fast and efficient. You will find almost all data by performing a quick recovery on the selected volume. You can also load an image file to perform quick recovery.

To perform quick recovery:

1. In the Stellar Phoenix Linux Data Recovery screen, under Data Recovery tab, select **Quick Recovery**.
2. In the Select Volume screen, all logical volumes that exist in hard disk will be listed. Select a volume and click **Start Scan**.
3. A quick scan will be performed on the selected volume and all files that are found in the selected volume is shown in a three pane structure. In the left pane, a tree structure according to folders is created. Top right pane shows preview of files. In bottom-right pane, all files that are stored in folders are listed. Double-click a folder to view files stored in that folder. Click a file from bottom-right pane to preview the file.
4. You can use these features of Stellar Phoenix Linux Data Recovery after scanning process is completed- Mask, Save Scan and Find. Mask feature can be used to narrow the scan result. A new tree will be created based on the file extensions when you apply mask. You can save the result of scanning process by using the save scan feature. You can restart recovery by using this scan information file later. Find feature can be used to search files from the scan result. You can save all files or individual files at preferred location.
 - **To select all files**
 - Click **Select All**, and then click **Recover**.
 - **To select individual files**
 1. Click a folder in the left pane to view files stored in it.
 2. Check checkboxes of file names, and then click **Recover**.
 - **To recover selected folders and files included in them**
 - Check the folder name checkbox in the left pane, and then click **Recover**.

You can also Add Filter to save only required files from the selected folder or files. In the Choose Destination screen, click **Add Filter** to add files types that should be saved. All other files that has different extension as added in the Add File Filter box will not be saved.

Stellar Phoenix Linux Data Recovery

5. In the Choose Destination screen, [select destination](#) to save files. In addition, you can save files in a compressed zip folder by using Compression Option. Click **OK**.

The selected files will be saved at the specified location. Navigate to the destination to view files.



Notes:

- You can only load an image file of volume. You cannot load an image file of hard disk in Quick Recovery.
 - You cannot save an empty folder. There should be at least one file in a folder to save the folder.
-

Advance Recovery

Advance recovery option performs an extensive search on the selected volume. Advance recovery option is slow but more efficient in searching lost, corrupted or deleted data. You will find almost all data from the selected source volume.

To perform advanced recovery:

1. In the Stellar Phoenix Linux Data Recovery screen, Under Data Recovery tab, click **Advanced Recovery**.
2. In the Select Volume screen, select a volume to scan for data. Click **Start Scan**.
3. Scanning process will start on the selected volume. All files that are found are shown in a three pane structure. In the left pane, a tree structure according to folders is created. Top right pane shows preview of files. In bottom-right pane, all files that are stored in folders are listed. Double-click a folder to view files stored in that folder. Click a file from bottom-right pane to preview the file.
4. You can use these features of Stellar Phoenix Linux Data Recovery after scanning process is completed- [Mask](#), [Save Scan](#) and [Find](#). Mask feature can be used to narrow the scan result. A new tree will be created based on the file extensions when you apply mask. You can save the result of scanning process by using the save scan feature. You can restart recovery by using this scan information file later. Find feature can be used to search files from the scan result. You can save all files or individual files at preferred location.
 - **To select all files**
 - Click **Select All**, and then click **Recover**.
 - **To select individual files**
 1. Click a folder in the left pane to view files stored in it.
 2. Check checkboxes of file names, and then click **Recover**.
 - **To recover selected folders and files included in them**
 - Check the folder name checkbox in the left pane, and then click **Recover**.

You can also [Add Filter](#) to save only required files from the selected folder or files. In the Choose Destination screen, click **Add Filter** to add files types that should be saved. All other files that has different extension as added in the Add File Filter box will not be saved.

Stellar Phoenix Linux Data Recovery

5. In the [Choose Destination](#) screen, specify the location where files should be saved. In addition, you can save files in a compressed zip folder by using Compression Option. Click **OK**.
-



Notes:

- You can only load an image file of volume. You cannot load an image file of hard disk in Advance Recovery.
 - You cannot save an empty folder. There should be at least one file in a folder to save the folder.
-

Deleted File Recovery

You can recover files that are deleted from a volume by using deleted file recovery process. This recovery option has two options for scanning a volume - Quick scan and Deep scan. Quick scan is fast in searching deleted data. Deep scan is slow but more efficient in searching deleted data. The scan result lists only files that are deleted from the selected drive.

However, the Quick Scan and Deep Scan options are available only when FAT volume is selected for scanning process. These two options are not available for ext2, ext3 and ext4 volumes.

To recover deleted files from a volume:

1. In the Stellar Phoenix Linux Data Recovery screen, under Data Recovery tab, select **Deleted File Recovery**.
2. In the Select Volume screen, select a volume to scan for deleted files. Click **Start Scan**.
3. If FAT volume is selected then select either **Quick Scan** or **Deep Scan**, click **Continue**, and then click **OK**. If ext2 or ext3 volume is selected, click **Continue**. The Quick Scan or Deep Scan option is not available when ext2, ext3 volumes is selected.
4. Scanning process will start on the selected volume. All files that are found are shown in a three pane structure. In the left pane, a tree structure according to folders is created. Top right pane shows preview of files. In bottom-right pane, all files that are stored in folders are listed. Double-click a folder to view files stored in that folder. Click a file from bottom-right pane to preview the file.
5. You can use these features of Stellar Phoenix Linux Data Recovery after scanning process is completed- Mask, Save Scan and Find. Mask feature can be used to narrow the scan result. A new tree will be created based on the file extensions when you apply mask. You can save the result of scanning process by using the save scan feature. You can restart recovery by using this scan information file later. Find feature can be used to search files from the scan result. You can save all files or individual files at preferred location.
 - **To select all files**
 - Click **Select All**, and then click **Recover**.
 - **To select individual files**
 1. Click a folder in the left pane to view files stored in it.
 2. Check checkboxes of file names, and then click **Recover**.
 - **To recover selected folders and files included in them**

Stellar Phoenix Linux Data Recovery

- Check the folder name checkbox in the left pane, and then click **Recover**.

You can also Add Filter to save only required files from the selected folder or files. In the Choose Destination screen, click **Add Filter** to add files types that should be saved. All other files that has different extension as added in the Add File Filter box will not be saved.

5. In the Choose Destination screen, [select destination](#) to save files. In addition, you can save files in a compressed zip folder by using Compression Option. Click **OK**.

The selected files will be saved at the specified location. Navigate to the destination to view files.



Notes:

- Scanning process is based on file signatures. If the required files are not shown after the scanning process then you should add desired file properties in File Types list by using [add file types](#) feature.
 - Only deleted files are shown after the scanning process. Corrupted files or files in deleted volumes will not be shown in the scan result.
-

Searching Lost Volumes

This recovery option allows you to recover data from deleted ext2, ext3, ext4 or FAT volumes of a hard disk. If you have deleted volumes from your hard disk and want to recover data from that deleted volumes then you should use this option. This option searches and lists all volumes that are deleted from a hard disk.

In addition, you can select either Quick Scan or Deep Scan option to scan for deleted volumes. Quick Scan is fast and finds almost all deleted volumes. However, Deep Scan is more efficient than Quick scan method but it is a slow scanning process. Deep scan can take minutes to hours to scan a hard disk for deleted volumes.

When all deleted volumes are listed after scanning process, you can recover data from ext2, ext3, ext4 or FAT volumes. You will need to select a volume and start scanning for data in the selected volume. All three recovery options: Quick, Advanced and Deleted File Recovery are available for scanning a volume for data.

You can also save the scan result of Search Lost Volume process and resume recovery by using that scan result such that you can recover data at any time from any of the volume that is found after the scanning process. This saves time since there is no need of scanning the entire hard disk again. However, the scan result will only show the volumes that are found during the scanning process if a volume is deleted after that scanning process then that volume will not be listed in the Select Volume screen.

To recover data from deleted volumes of a hard disk:

1. In the Stellar Phoenix Linux Data Recovery, under Data Recovery tab, click **Search Lost Volume**.
2. In the Select Drive screen, all hard disks that are attached to computer are listed. Select a hard disk and click **Start Scan**.
3. In the Scan Mode dialog box, select either **Quick Scan** or **Deep Scan**. Click **OK**.
4. The Select Volume screen lists all volumes that are found in the selected hard disk. Select a volume and click **Continue**.
5. Select the recovery option - [Quick Recovery](#), [Deleted File Recovery](#) or [Advance Recovery](#).

Applying Mask

Mask allows you to narrow the scan result. After completion of scanning process, all scanned files are listed in a tree structure. You can apply mask to create a new tree structure from the existing tree structure according to file types. The new tree structure will only contain the selected file types. For example, you want to view and recover only Word documents. Scanning process show you all created files in a tree structure. You can apply mask to create a new tree structure that will contain only Word documents.

You can view the original tree structure that is created after scanning by removing mask. This will automatically shows the original tree structure that was shown after scanning process.

To apply mask:

1. When the scanning process is completed, click **Mask**.
2. In the Set File Mask screen, define values
 - **Files of type:** Type the extension of required files such as .doc, .avi in the textbox. The new tree will only contain files that are specified in this box.
 - Check the required checkboxes:
 - **Match Case:** to search according to the typed text
 - **Deleted File:** to search the typed text in deleted files' name
 - **Existing Files:** to search the typed text in existing files' name
 - **Size from (KB):** to search files according to file size. Type the limits in textboxes.
 - **Date:** To search files according to date
 - **Date list box:** select any of the three option from date list box - **Created Date, Last Access Date, Modified Date**
 - **in the last months:** specify number of months in this box
 - **in the last days:** specify number of days in this box
 - **between:** specify time period
3. Click **OK**. A new tree structure will be shown according to the values defined in mask screen.



Note:

- You can define one or all values in Mask screen.
-

To remove mask:

- Click **Unmask** icon. This will automatically show the original tree structure shown after created.

Finding Files

You can search files in the list of files shown after scanning process. If you want to recover specific files from the list of scan result you can use Find button. This option provides you various options for searching required files.

To search files:

1. In the Data Recovery screen, click **Find**.
2. In the Find screen, type text in the **Enter file type(s) delimited by semi-colons** textbox. Check/Clear the **Deleted File**, **Match Case** and **Existing Files** checkboxes such that typed text should be searched in these file names. Click **Search Now**.
3. File that contains the typed string will be highlighted in the Data Recovery screen. Press **F3** to highlight the next file that contains the same or relative text.

Advanced Options

Advanced option of Find option enables you to search files according to the date criteria and size of file. You can define size of file in KB textbox such that, search should be performed on the basis of defined size. You have two option for size, either the file should not exceed the defined size or at least of the defined size.

Date search provides you three options- Last Access Date, Last Modified Date or Created Date for searching required file. Select **Last Access Date** to search file according to the last accessed date. Select **Last Modified Date** to search file according to the last modified date. Select **Created Date** to search file according to the creation date of file. In addition, you can specify number of days, number of months or time interval for any of the selected date option.

To search files by using advanced options:

1. In the Find screen, click **Advanced**.
2. Check either
 - **Size Checkbox**

Select this checkbox to search required file according to its size. Click **Size** listbox and select either **at least** or **at most** option. Type numeral number in the KB textbox.
 - **Date Checkbox**

Select this checkbox to search required file according to date. In the date listbox, you can select any of the option - **Created Date**, **Last Access Date** and **Modified Date** from date listbox. After selecting the required option,

Stellar Phoenix Linux Data Recovery

select any of the option - **in the last month** to specify number of months, **in the last days** to specify number of days and **between** to specify a time interval. Use up and down button to increase or decrease numbers or type in boxes.

3. Click **Search Now**. The file, if found, will be highlighted in the Data Recovery screen.



Notes:

- You should specify text in the **Enter file type(s) delimited by semi-colons** textbox to enable the **Search Now** button.
 - You can also apply Size and Date options in a single search.
-

Applying Filter

Filters allows you to select files on the basis of extensions. You can include, exclude files by applying filter. Scanning process shows every file that is found during the process. You can apply filter to save only required files.

To apply filter:

1. When scanning process is completed, select folders or files that need to be recovered. Click **Recover** icon, and in the Choose Destination box, click **Filter**.
2. A list of extensions categorized according to file types is available in drop-down box.
3. Select a group from **Enter Filter basis** listbox. Click **Add**. All extensions under that group will be listed in bottom box.

- **Remove**

This option removes the selected extension from the left pane. Select an extension and click **Remove**. Files that are having the same extension will not be included when you save recovered files.

- **Include**

This option includes the selected file extension. Select an extension from left-pane and click **Include**. Files that are having the same extension will only be included when you save recovered files. All files with extension other than the selected extension will not be included when you save recovered files.

- **Exclude**

This option excludes the selected file extension. Select an extension from left-pane and click **Exclude**. Files that are having the same extension will be excluded when you save recovered files. All files with extension other than the selected extension will be included when you save recovered files.

You can also add a file extension other than the available extensions. Type in the Enter File Basis listbox and click **Add**.

Files that are selected for recovery will be filtered on applying filter. Only those files will be saved that has matching extension as added in the Enter File Basis box. All other files that are selected for recovery will be excluded if their extension is different from extensions added in the Enter File Basis box.

For example, in the Data Recovery screen, you have selected a folder that have different file types such as doc, avi, mp3. Click **Recover**. In the choose Destination box, click **Add Filter**. In the Add File Filter box, in the Enter File Basis box type an extension such as .doc. Click **Add**, and then click **Include**. Specify the destination and click **OK**. Files that are

Stellar Phoenix Linux Data Recovery

having the .doc extension will be saved only. All other files that exists in the folder, which is selected in the Data Recovery screen, for recovery will be excluded. This means filter feature saves only files that has matching extension as added in Add File Filter box. All other files selected for recovery will be excluded if extensions are different.

Saving Scan Information

You can save scan result of any scanning process as an image (.img) file. You can save scan result of a complete or incomplete recovery process. If you stopped a scanning process, you can save scan information up to that point. However, you should perform complete scan, and then save scan result.

Saving scan information saves your time. Since, you will not need to scan the same drive again. You can resume recovery by selecting the image file.

To save scan information:

1. Click **Save Scan**.
2. In the Save scan information dialog box, browse to the location where image file should be saved. Type the name of the image file in the File name textbox. Click **Save**.



Note: You will also be prompted to save scan information when you click **Back** button or close Stellar Phoenix Linux Data Recovery after a scanning process.

Specifying Destination

You can save recovered files either to local hard disk or to a File Transfer Protocol (FTP) server. You can also apply compression option to recovered files.

- **To save recovered files to local hard disk**

Select **Recover to local drive** option. Click **Browse** to specify the location where files should be saved. Click **OK** twice.

- **To save recovered files to FTP server**

1. Select **Recover to FTP server** option. Click **FTP Option**.
2. Provide the required values such as Server Name/ IP Address, Port No., Username and Password.
3. Click **Browse**, select a folder and click **OK** three times.

Applying Compression

You can save recovered files in compressed zip folders. However, you can only apply compression if recovered files are saving to local disk drive.

- **To apply compression option**

Check the **Create compressed file** checkbox. Select:

- **Compress each file individually**

This option saves all selected file in their corresponding zip folder.

- **Compress to a single file**

This option saves all recovered files in a single zip folder.

Resuming Recovery

Resume recovery feature allows you to restart recovery from last saved point by using either

- [Scan information file](#)
- [Image file](#)

Both, the [scan information file](#) and [image of a drive](#) are saved as an image file (.img). You should save scan information file and image file of a drive at different locations with proper naming such that you can easily retrieve the required file for restarting recovery.

Using Scan Information File

Scan information file contains the information of a scanning process. The scan information file is saved as an image file (.img). You can save scan information file during any completed or uncompleted recovery process. You can use an image file to restart recovery at any time. For example, you saved image file of a scanning process and recovered only some files from that scan result. Later, you want to recover some more files from the same drive. You can use the saved image file to restart recovery.

Using a scan information file saves time, since, scanning process does not take place. All files and folders that are shown in earlier scanning process will be shown on loading an image file. In addition, if you have performed scanning process but not saved any files then you can use image file to restart recovery at any time.

You should remember that the image file you are using to restart recovery is of which recovery process. Since, you cannot perform a different recovery process by using a different image file. For example, an image file of quick recovery process shows the result of earlier quick recovery's scan result not of advanced recovery.

To resume recovery by using scan information file:

1. Click **Resume Recovery** tab and then click **Browse**.
2. In the Open dialog box, locate and select the scan information file (.img), and then click **Open**.
3. Click **Continue**, all folders and files are listed in the Data Recovery screen. Recover required files.

Using Hard Disk or Volume Image

Hard disk or volume image is the image of a hard disk or volume, or selected region of the hard disk or volume that is created by using Drive Imaging feature of Stellar Phoenix Linux Data Recovery. This image is saved as an image file (.img). When you create an entire image of selected hard disk or volume scanning process is not performed, instead, a copy of the selected hard disk is saved as .img file. You can start recovering data either after completion of drive imaging process or at later time by using resume recovery feature.

When you select an image of a hard disk than all volumes that exists in that hard disk image are listed in the Select Volume screen. You will need to select a volume from the list and select any of the recovery options: Quick Recovery, Advanced Recovery or Deleted File Recovery.

Whether, you have scanned or not, the image file of hard disk or volume after the creation of image, the resume recovery feature provides you all the three recovery options on selecting an image file. If after the completion of image process, you have performed quick recovery than still you can perform quick, advanced or deleted file recovery process by using resume recovery feature.

In addition, you can save scan information after scanning, and use the scan information file to restart recovery at any time.

To restart recovery by using hard disk image:

1. Click **Resume Recovery** tab, and then click **Browse**.
2. In the Open dialog box, locate and select the image file of a hard disk, and then click **Open**.
3. Click **Continue**, In the Select Volume screen, click on a volume name to select the volume and, then click **Start Scan**. Select either - [Quick Recovery](#), [Advanced Recovery](#) or [Deleted File Recovery](#).
4. All folders and files will be listed in the Data Recovery screen. Recover required files.

To restart recovery by using volume image:

1. Click **Resume Recovery** tab, and then click **Browse**.
2. In the Open dialog box, locate and select the image file of a volume, and then click **Open**.
3. Click **Continue** and then select either - [Quick Recovery](#), [Advance Recovery](#) or [Deleted File Recovery](#).
4. All folders and files are listed in the Data Recovery screen. Recover required files.



Note:

- It is recommended that you should save scan information file and hard disk image at different locations with proper name such that you can easily retrieve the required image file.
 - If you have created an image of small region of hard disk then there may be a case that no volume will be shown after you select the image file for restarting recovery.
-

Cloning and Image

Stellar Phoenix Linux Data Recovery provides you many advance features that help you in recovering and preserving your data.

- [Drive Imaging](#): You can create image of hard disk or volume. In addition, you can create an exact replica of a hard disk.
- [Drive Status](#): You can view the status of hard disk attached to your computer. Moreover, you can scan hard disk such that bad sectors, if any, developed in hard disk can be detected.

Creating Image

You can create image of a hard disk or volume by using Stellar Phoenix Linux Data Recovery. In addition, you can create image of selected region of hard disk or volume.

Select Create Image icon to:

- [Create image of entire hard disk or volume](#)
- [Create image of selected region of hard disk or volume](#)

Select Clone Disk icon to:

- [Clone Disk](#): Use this to create an exact replica of a hard disk. You should have another hard disk equal or greater in size to create clone of a hard disk.

Create Image of Entire Drive

You can create image of entire hard disk or volume and save them as .img file by using Create Image feature of Stellar Phoenix Linux Data Recovery.

The image of both sources are saved as .img file. This .img file is of same size as of the source. You can use image files to [restart recovery](#) later.

The image you create by using Create Image option of Stellar Phoenix Linux Data Recovery will be of same size as the selected hard disk or volume. Ensure that the location where image file needs to be saved has sufficient space to store the image file.

To create image file of entire hard disk or volume:

1. Under Advance Options tab, select **Drive Imaging**.
2. In the Drive Imaging screen, select **Create Image**.
3. In the Select Drive\Volume screen, select hard disk from Drive List or a volume from Logical Volume list. Click **Continue**.
4. In the Save As dialog box, locate the destination where image file should be saved. In the File Name text box, type a name. Click **Save**.
5. The Disk Image Creation shows the image creation process. When the image is successfully created, a message appears. Click **OK**.

You can click **Continue** to start recovering files from the newly created image or start recovery later by using [resume recovery](#) option.

If you have created an image of a volume than on clicking **Continue** you can perform either [Quick Recovery](#), [Deleted File Recovery](#) or [Advanced Recovery](#) on the newly created image.

If you have created an image of hard disk than all the volumes that are existing in the selected hard disk will be shown. You will need to select a volume and then start recovery by using [Quick Recovery](#), [Deleted File Recovery](#) or [Advanced Recovery](#) on the newly created image.

Create Image of Selected Region

You can create an image of selected region of hard disk or logical volume. You will need to specify starting and ending sectors of the selected source. You can use this image file for [resuming recovering](#) at any time.

To create image of selected region of source:

1. In the Stellar Phoenix Linux Data Recovery screen, under Advanced Options tab, select **Drive Imaging**.
2. In the Drive Imaging screen, select **Create Image**.
3. In the Select Drive/Volume screen, select either hard disk from Drive List or a volume from Logical Volume list.
4. Click **Select Region** icon. In the Select Specified Region screen, drag the sliders to define starting and ending sectors of the image file. Click **OK**, and then click **Continue**.
5. In the Save As dialog box, locate the destination where image file should be saved. In the File Name text box, type name. Click **Save**.
6. The Disk Image Creation shows the image creation process. When the image is successfully created, a message appears. Click **OK**.

You can click **Continue** to start recovering files from the newly created image or start recovery later by using [resume recovery](#) option.

If you have created an image of a volume than on clicking **Continue** you can perform either [Quick Recovery](#), [Deleted File Recovery](#) or [Advanced Recovery](#) on the newly created image.

If you have created an image of hard disk than all the volumes that are existing in the selected hard disk will be shown. You will need to select a volume and then start recovery by any of the recovery option. However, if there is no volume is shown than still you can search lost or deleted volumes by using Search Lost Volume feature. Click on **Search Lost Volume** icon to start scanning for lost or deleted volume. After scanning process volumes, if found, will be shown in the Select Volume screen. Select a volume and start recovering data from that volume.

Cloning Hard Disk

Cloning option of Stellar Phoenix Linux Data Recovery allows you to create an exact replica of a hard disk. You will need to attach another hard disk for cloning a hard disk. The size of the destination hard disk should be same or greater than the source hard disk.

To clone a hard disk:

1. Under Advance Options tab, select **Drive Imaging**.
2. In the Drive Imaging screen, select **Clone Disk**.
3. In the Disk Cloning screen, click **Source Disk** list box to select **source disk drive**.
Click **Target Disk** list box to select **destination disk drive**.
4. Click **Start Cloning**.

Drive Status

The drive status feature of Stellar Phoenix Linux Data Recovery shows information of the attached hard disk. The Drive Status box displays model number, serial number, size, temperature, status, S.M.A.R.T feature and firmware revision number of attached hard disk. In addition, S.M.A.R.T information are also listed in the S.M.A.R.T information box.

The Drive Information box shows information such as total sectors, sectors per track, number of cylinders and number of heads. The volume Information box shows information of existing logical volumes in the hard disk.

To view hard disk status:

- Under Advance Options tab, select **Drive Status**.

The Drive Status screen shows all information related to selected hard disk.

The screenshot displays the 'Stellar Phoenix Linux Data Recovery' application window. The 'Drive Status' section shows a table with the following data:

No.	Model No.	Serial No.	Size	Temperature	Status	S.M.A.R.T. Feature	Firmware Revision
0	ST316021...	SRA3HA3G	149.05 GB	105 °F	OK	Enabled	4.AAB

The 'Drive Information' section shows:

- Total Sectors: 268435455
- Sectors per Track: 63
- Number of Cylinders: 16383
- Number of Heads: 16

The 'S.M.A.R.T. Information' section shows a table with the following data:

ID	Attribute Name	Status	Attribute	Worst	Threshold	Fitness
1	Raw Read Error Rate	OK	100	253	0	100%
3	Spin Up Time	OK	97	97	0	97%
4	Start/Stop Count	OK	100	100	0	100%
5	Reallocated Sector Count	OK	100	100	0	100%
7	Seek Error Rate	OK	83	60	0	60%
9	Power On Hours Count	OK	96	96	0	96%
A	Spin Retry Count	OK	100	100	0	100%
C	Power Cycle Count	OK	100	100	0	100%
BB	(Unknown Attribute)	OK	100	100	0	100%
BD	(Unknown Attribute)	OK	98	98	0	98%
BE	(Unknown Attribute)	OK	59	49	0	49%

The 'Volume Information' section shows a table with the following data:

Volume	File System	Volume Size	Free Space	Starting Sector
C:\	NTFS	24.41 GB	17.44 GB	63
D:\	NTFS	57.49 GB	41.35 GB	51199155

At the bottom of the window, there are three buttons: 'Help', 'Back', and 'Scan Disk'.

Scanning Hard Disk

You can scan hard disk to view that whether there are bad sectors exist in your hard disk or not. The scanning process shows you the bad sectors that has been developed in hard disk. You can use this feature to view status of your hard disk.

To scan hard disk:

1. Open Windows Data Recovery, under Advance Options tab, select **Drive Status**.
2. In the Drive Status screen, click **Scan Disk**. Bad blocks are shown in red color, if any, found in hard disk.


Loading Image

You can load an image file to restart recovery by using an earlier scanning process. For example, you have saved scan information file of quick recovery's scanning process. You can use that image file to restart recovery. This saves time, since, scanning process does not performed. However, If you have made changes to a volume and then trying to recover data from previous image file of that volume then changes occurred in that volume will not be shown in the scan result.

You should select correct image file for the recovery process. For example, if you want to restart quick recovery process by using an image file then the selected image file should be created during quick recovery. You cannot restart recovery by using different image file for different recovery process. For example, a quick recovery process can only be restarted by using an image file created during quick recovery.

To select image:




1. Click  to open Open dialog box.
2. Browse and select the required image file. Click **Open**.


Log Report

You can view, save and clear log report of Stellar Phoenix Linux Data Recovery processes. Log file is saved as .txt file.


- **To view log report**

- Click  to open log viewer. All details of Stellar Phoenix Linux Data Recovery process are listed in this window.

- **To save log report**

1. Click  to open log viewer.
2. Click **Save Log**. In the Save As dialog box, type a name for the text file in File name textbox. Locate the destination where .txt file should be saved. Click **Save**.

- **To clear Log**

- Click  to open log viewer. Click **Clear Log**.

[Previous](#) [Next](#)

Legal Notices

[Copyright](#)

[Disclaimer](#)

[Trademarks](#)

[License Agreement](#)

Copyright

Stellar Phoenix Linux Data Recovery software, accompanied user manual and documentation are copyright of Stellar Information Systems Ltd., with all rights reserved. Under the copyright laws, this user manual cannot be reproduced in any form without the prior written permission of Stellar Information Systems Ltd. No Patent Liability is assumed, however, with respect to the use of the information contained herein.

Copyright © 1995-2009 by Stellar Information Systems Ltd. INDIA

Disclaimer

The Information contained in this manual, including but not limited to any product specifications, is subject to change without notice.

STELLAR INFORMATION SYSTEMS LTD PROVIDES NO WARRANTY WITH REGARD TO THIS MANUAL OR ANY OTHER INFORMATION CONTAINED HEREIN AND HEREBY EXPRESSLY DISCLAIMS ANY IMPLIED WARRANTIES OF MERCHANTABILITY OR FITNESS FOR ANY PARTICULAR PURPOSE WITH REGARD TO ANY OF THE FOREGOING STELLAR INFORMATION SYSTEMS LTD ASSUMES NO LIABILITY FOR ANY DAMAGES INCURRED DIRECTLY OR INDIRECTLY FROM ANY TECHNICAL OR TYPOGRAPHICAL ERRORS OR OMISSIONS CONTAINED HEREIN OR FOR DISCREPANCIES BETWEEN THE PRODUCT AND THE MANUAL. IN NO EVENT SHALL STELLAR INFORMATION SYSTEMS LTD, BE LIABLE FOR ANY INCIDENTAL, CONSEQUENTIAL SPECIAL, OR EXEMPLARY DAMAGES, WHETHER BASED ON TORT, CONTRACT OR OTHERWISE, ARISING OUT OF OR IN CONNECTION WITH THIS MANUAL OR ANY OTHER INFORMATION CONTAINED HEREIN OR THE USE THEREOF.

License Agreement

Stellar Phoenix Linux Data Recovery

Copyright © 1995-2009 by Stellar Information Systems Ltd. INDIA

www.stellarinfo.com

All rights reserved.

All product names mentioned herein are the trademarks of their respective owners.

This license applies to the standard-licensed version of Stellar Phoenix Linux Data Recovery.

Your Agreement to this License

You should carefully read the following terms and conditions before using, installing or distributing this software, unless you have a different license agreement signed by Stellar Information Systems Ltd.

If you do not agree to all of the terms and conditions of this License then do not copy, install, distribute or use any copy of Stellar Phoenix Linux Data Recovery with which this License is included, you may return the complete package unused without requesting an activation key within 30 days after purchase for a full refund of your payment.

The terms and conditions of this License describe the permitted use and users of each Licensed Copy of Stellar Phoenix Linux Data Recovery. For purposes of this License, if you have a valid single-user license, you have the right to use a single Licensed Copy of Stellar Phoenix Linux Data Recovery. If you or your organization has a valid multi-user license, then you or your organization has the right to use up to a number of Licensed Copies of Stellar Phoenix Linux Data Recovery equal to the number of copies indicated in the documents issued by Stellar when granting the license.

Scope of License

Each Licensed Copy of Stellar Phoenix Linux Data Recovery may either be used by a single person or used non-simultaneously by multiple people who use the software personally installed on a single workstation. This is not a concurrent use license.

All rights of any kind in Stellar Phoenix Linux Data Recovery, which are not expressly granted in this license, are entirely and exclusively reserved to and by Stellar Information Systems Ltd. You may not rent, lease, modify, translate, reverse engineer, decompile, disassemble or create derivative works based on Stellar Phoenix Linux Data Recovery nor permit anyone else to do so. You may not make access to Stellar Phoenix Linux Data Recovery available to others in connection with a service bureau, application service provider or similar business nor permit anyone else to do so.

Warranty Disclaimers and Liability Limitations.

Stellar Phoenix Linux Data Recovery

Stellar Phoenix Linux Data Recovery and all accompanying software, files, data and materials are distributed and provided AS IS and with no warranties of any kind, whether expressed or implied. In particular, there is no warranty for the quality of data recovered. You acknowledge that good data processing procedure dictates that any program including Stellar Phoenix Linux Data Recovery must be thoroughly tested with non-critical data before there is any reliance on it and you hereby assume the entire risk of all use of the copies of Stellar Phoenix Linux Data Recovery covered by this License. This disclaimer of warranty constitutes an essential part of this License.

In addition, in no event does Stellar authorize you or anyone else to use Stellar Phoenix Linux Data Recovery in applications or systems where its failure to perform can reasonably be expected to result in a significant physical injury or in loss of life. Any such use is entirely at your own risk and you agree to hold Stellar harmless from any and all claims or losses relating to such unauthorized use.

General

This License is the complete statement of the agreement between the parties on the subject matter and merges and supersedes all other or prior understandings, purchase orders, agreements and arrangements. This License shall be governed by the laws of the State of Delhi, India. Exclusive jurisdiction and venue for all matters relating to this License shall be in courts and for a located in the State of Delhi, India and you consent to such jurisdiction and venue. There are no third party beneficiaries of any promises, obligations or representations made by Stellar herein. Any waiver by Stellar of any violation of this License by you shall not constitute nor contribute to a waiver by Stellar of any other or future violation of the same provision or any other provision of this License.

Copyright ©1995-2009 by Stellar Information Systems Ltd. All rights reserved.

Trademarks

Stellar Phoenix Linux Data Recovery® is a registered trademark of Stellar Information Systems Ltd.

Windows 2000 Server®, Windows XP®, Windows 2003® and Windows Vista® are registered trademarks of Microsoft® Corporation Inc.

All Trademarks Acknowledged.

All other brands and product names are trademarks or registered trademarks of their respective companies.

Technical Support

Our Technical Support professionals will give solutions for all your queries related to Stellar Products.

You can either Call Us or Go Online to our support section
<http://stellarinfo.com/esupport/users/kb.php>

Support Helpline

Monday to Friday [24 Hrs. a day]

USA (Toll free - Pre Sales Queries)	1-866-554-2512
USA (Post Sales Queries)	1-315-220-6245
UK (Europe)	+44-207-993-2293
Germany	+49-180-110-105-0051
Worldwide	+91-921-395-5509
Skype Id	stellarsupport
Email Orders	orders@stellarinfo.com

Online Help

- [Chat Live](#) with an Online technician
- Search in our extensive [Knowledge Base](#)
- [Submit Ticket](#) (If our Knowledge Base does not answer your question)
- Login and view [Ticket Status](#) (If you already have a valid Ticket with you)

Stellar Phoenix Linux Data Recovery

- [Download Documents](#) on Product Usage (For Registered members only, i.e, user with login ID. If you are an unregistered user, please visit <http://stellarinfo.com/esupport/users/login.php> to create login ID)

About Stellar

Stellar Information Systems Ltd. is a trusted name in the field of Data Recovery and Data Protection Software for more than a decade.

We provide the widest range of Data Recovery Products. Our range includes Data Recovery Software for almost all Operating Systems and File Systems.

Product line:

Data Recovery

A widest range of data recovery software that helps you recover your valued data lost after accidental format, virus problems, software malfunction, file/directory deletion, or even sabotage!. [More Info >>](#)

File Recovery

The most comprehensive range of file undelete and unerase software for Windows and MS office repair tools. [More Info >>](#)

Email Recovery

A wide range of mail recovery, mail repair and mail conversion applications for MS Outlook, MS Outlook Express and MS Exchange useful in instances of data loss due to damages and corruption of Email. [More Info >>](#)

Data Protection

A wide range of Prevent Data Loss, Data backup and Hard Drive Monitoring Applications to ensure complete data protection against hard drive crash. [More Info >>](#)

Data Sanitization

Data cleanup and file eraser utility can delete selected folders, groups of files, entire logical drives, System Traces & Internet traces. Once the data have been removed using Stellar Wipe - Data File eraser utility, it is beyond recovery limits of any Data Recovery Software or utility. [More Info >>](#)

For more information about us, please visit www.stellarinfo.com

Index

A

add file	17, 23
Add Filter	49, 61
Add New Header	19
ALZ	43
Applying	57, 61
Filter	61
Mask.....	57
ARJ	43
ASF	43
ASM	43
ASP	43
AU	43
Audio Video	43
AVI	43

B

BAT	43
BKF	43
BMP	43
BOX version.....	33

C

C, PRG	43
CAB	43
CC.....	43

CD.....	33
CGI.....	43
cloning.....	73, 81
Compression.....	65
Compression Option	51
CPP.....	43
Create Image	77
CS	43
CSPROJ	43
CSS.....	43
CSV.....	43
CXX.....	43

D

DBF	43
Deep Scan	53
DEF	43
DIB	43
disk temperature	15
DNG	43
DOC	43
DOCX.....	43
DOT	43
DOTX	43
Drive Information.....	83

Stellar Phoenix Linux Data Recovery

DSP43

DSW43

E

Edit Header File21

Electronic Software Registration33

Email37

EMF43

ERF43

ESD version33

Ext23, 49

Ext33, 49

Ext43, 49

Extension21

F

FAT3, 49

FAT123

FAT163

FAT323

file type17, 23, 43

Finding59

Files59

FRM43

FTP Option65

G

GIF43

H

HH 43

HPP 43

HTM 43

HTML 43

I

image 43, 73

Image Files 43

Img 71

Img file 77

INF 43

INI 43

Internet 35

J

J2C 43

J2K 43

JAVA 43

JBG 43

JFIF 43

JNG 43

JP2 43

JPC 43

JPE 43

JPEG 43

JPG 43

JS.....	43	MPEG	43
JSP	43	MPG.....	43
K		N	
K25	43	NEF	43
KB	57	O	
KDC	43	Online Registration	33
L		Operating	9
LIC	43	Systems.....	9
linking mode.....	15	Order.....	29, 31
Live Update.....	5	P	
Log.....	43, 89	PCX.....	43
log settings.....	15	PDF	43
LZH	43	PEF	43
M		PGM.....	43
Manual Activation	33, 41	PGX	43
Mask	57	PHP.....	43
Max File Size	21	PHX_REG.....	41
MDF	43	PLG	43
MHTML.....	43	PNG	43
MID	43	PNM.....	43
MIDI	43	POT.....	43
Minimum 256 MB.....	9	POTX	43
Minimum System Requirements.....	9	PPM	43
MNG	43	PPS.....	43
MP3	43	PPSX	43

Stellar Phoenix Linux Data Recovery

PPT	43	Stellar Phoenix Linux Recovery.....	43
PPTX	43	Supported	43
Preview	43		
		T	
Q		TAR	43
Quick Scan	53	TEXT	43
		TGA.....	43
R		TIF.....	43
RAM.....	9	TIFF	43
RAR	43	TXT	43
RAS	43	Txt file	41
REG	43		
Register	29	V	
Remove	25	VCPROJ	43
Resuming.....	67	Vista	9
Recovery	67		
RMI	43	W	
RTF.....	43	WAV.....	43
		WBMP	43
S		Windows 2000/2003/XP	9
scan disk.....	73	Windows NT4.....	9
Scan Information.....	63	WMA	43
Searching		WMF	43
Lost Volumes	55	WMV	43
Selected Region	79		
SHTM.....	43	X	
SHTML.....	43	X3F	43
SLN.....	43	XHT	43
		XHTML.....	43

Index

XLB43
XLS43
XLSX.....43
XLT43
XLTX.....43

XLW 43
XML..... 43
XP 9
Z
ZIP 43