



Stellar

Drive Clone

Stellar Drive Clone 2.5 User Guide



Overview

Stellar Drive Clone for Mac, creates clone and image of hard drive or volume as well as restores backup and volume image. Clone created can be used as a backup or as a startup disk. Entire content from the source is copied to destination, retaining every details of the original drive which makes the clone drive bootable. The cloning process will erase data from the destination drive beyond recovery. The software creates hard drive or volume image for backup purpose and can recover data from it at any moment. In addition, you can restore volume from a folder or a mountable volume image file to its previous state. Another important feature of **Stellar Drive Clone** is the ability to create bootable DVD and minimal system, which comes handy when Mac OS crashes or fails to boot.

What's new in this version?

- Support for Partition Map scheme MBR (Master Boot Record).
- Support for ExFAT file system.
- Clones Solid State Drive(SSD) to Mac Drive.
- Clones NTFS formatted drive into ExFAT formatted drive in Lion OS.

Key Features:

- Creates a complete replica of drive or volume.
- Can resize the volume of the destination drive to make full use of it.
- Supports cloning of drive volume to another volume, folder or connected network drive.
- Creates image of the hard drive or volume for backup purpose.
- Restores volume from a folder or a mountable volume image.
- Creates bootable DVD and Minimal System for Mac OS X.
- Preferences can be set to personalize end task activities and software updation.

Why Stellar Drive Clone?

Creates Clone of Hard Drive/Volume

Clone of hard drive/volume involves creating a copy of entire drive or volume content. A Clone, created using Stellar Drive Clone, can be used as backup or a boot drive. A clone is useful if there is a need to upgrade hard drive, reboot or restore system or when a full system backup is needed. Stellar Drive Clone can be used to create clone of drive/volume to a drive, volume, folder or a network drive.

Capable of Resizing Volumes on Target Drive

Stellar Drive Clone creates clone of a drive to another hard drive having size equal or greater than the source drive. If the target drive is of higher capacity, **Stellar Drive Clone** can resize volumes in the target drive to make full use. By default, drive cloning takes place without any changes. So, if the target drive has more space then the free space left after cloning will be of no use. For making the drive space useful, you need to choose Resize volume(s) of destination drive in the application and specify the new volume size.

Creates Image of Hard Drive/Volume

Image file contains complete content of the source hard drive or volume. These image files ignore unused file space and bad sectors, so requires less storage. Using image files you can restore the entire disk or a volume in the event of system crash. Stellar Drive Clone supports creating image of both hard drive and volumes.

Restores Volume from Folder/Image File

Restore feature is used to copy back the data from the cloned folder or an image file to the volume to put it into its original state. Restoration process by Stellar Drive Clone is much faster than the manual process.

Creates Bootable DVD

Bootable feature of Stellar Drive Clone allows users to create personal bootable DVD for Mac OS X. The bootable Mac DVD can include one or more installed applications into it. Stellar Drive Clone is installed automatically into the bootable DVD. The compatibility of the DVD depends on the machine it is created. This means that if the DVD is created on PowerPC, you can use it to boot PowerPC machine only.

Creates Minimal System Drive

Stellar Drive Clone can be used to create a minimal system that can be used to boot the system

in case of emergency. This feature will copy all the system files from an installed Mac OS X to another volume. The result of the copy is a minimal system with Apple's default applications and an empty user's folder containing default folders, preferences etc.

Installation Procedure

Before installing the software, check that your system meets the minimum system requirements:

Minimum System Requirements

- **Processor:** Intel, PowerPC(G3 or later)
- **Operating System:** Mac OS 10.4.11 and above
- **Memory:** 1 GB RAM
- **Hard Disk:** 25 MB of free space

Steps to install Stellar Drive Clone

- Unpack **StellarDriveClone.dmg.zip** file.
- Decompress the zip file and double click the **dmg** file. This step will mount a virtual volume - **StellarDriveClone**.
- Double-click **StellarDriveClone** volume to open **Stellar Drive Clone** application window.
- Drag **Stellar Drive Clone** file to the **Applications** folder.
- To launch the software, double click on **Stellar Drive Clone** file in **Applications** folder.
- This displays **License Agreement**. If user accepts the **License Agreement**, then the software is launched; otherwise, it terminates.

To remove the software, drag and drop the **StellarDriveClone** file from **Applications** folder to **Trash**.

Order and Register

Order Stellar Drive Clone

The software can be purchased online. For price details and to place an order, [click here](#).

Once the order is confirmed, a pre-paid registration key will be sent through e-mail, which would be required to register the software.

Register Stellar Drive Clone

To Register Stellar Drive Clone

1. On the **Tools** menu, click **Register**. Registration window is displayed.
2. Do one of the following:
 - If you have purchased the product and received registration key,
 - a. Select '*I have a key to register the product*' option. Click **OK**.
 - b. In the Registration Key box, type the key. Click **OK**.
 - If you have to purchase the product,
 - Select '*I don't have a key to register the product*'. Click **OK**, to purchase the product.

How to Update?

To Update **Stellar Drive Clone**, do one of the following:

To check automatically

1. Run **Stellar Drive Clone**, *Update* screen is displayed along with the main user interface.
2. To download the latest version, click **Update** button. It may take few seconds to minutes to download the files. Once completed, '*Update successfully installed*' message appears.
3. Click **OK**. Click **Cancel** to check for updates manually.

To check manually

1. Run **Stellar Drive Clone** application.
2. Click **Continue** button.
3. On the **StellarDriveClone** menu, click **Preferences** option.
4. Click **General** tab in the **Preferences** screen. Click **Check for updates now** option.
5. If updates are available, Update screen is displayed. Follow the next step. If no updates are available, a message that '*There are no updates available*' is displayed.
6. Click **Update** button to download the latest version. It may take few seconds to minutes to download the files. After completion, '*Update successfully installed*' message appears.
Click **OK**.

Stellar Support

Our Technical Support professionals will give solutions for all your queries related to Stellar Products.

You can either **Call Us** or **Go Online** to our support section at <http://stellarinfo.com/support/>.

For **price details** and to **place the order**, click <http://www.stellarinfo.com/mac-software/clone-mac/buy-now.php>.

Chat Live with an **Online technician** at <http://stellarinfo.com/support/>.

Search in our extensive **Knowledge Base** at <http://www.stellarinfo.com/support/kb.php>.

Submit enquiry at <http://www.stellarinfo.com/support/enquiry.php>.

E-mail to Stellar Support at support@stellarinfo.com.

Support Helpline

Monday to Friday [24 Hrs. a day]

USA (Tollfree- Pre Sales Queries)	+1-877-778-6087
USA (Post Sales Queries)	+1-732-584-2700
UK (Europe)	+44-203-026-5337
Australia & Asia Pacific	+61-280-149-899
Netherlands Pre & Post Sales Support	+31-208-111-188
Worldwide	+91-921-395-5509
Skype Id	stellarsupport
Email Orders	orders@stellarinfo.com

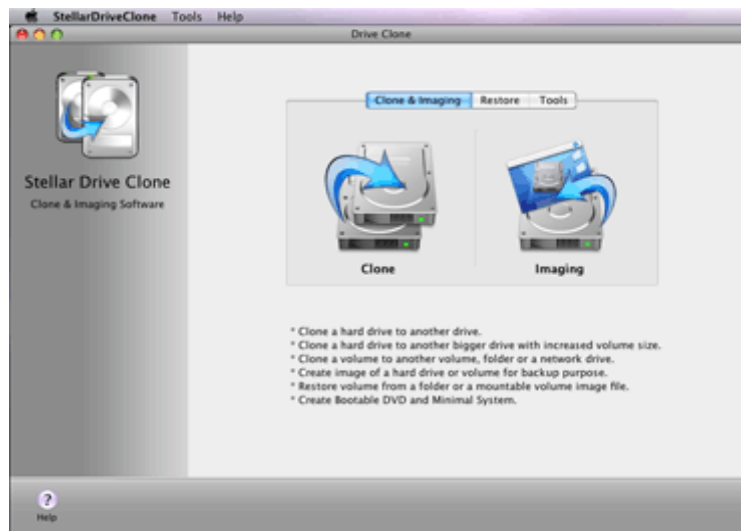
Starting Stellar Drive Clone

Follow any of the following methods to run **Stellar Drive Clone** on a Mac system.

- Double click on **Stellar Drive Clone** file in **Applications** folder.
- Double-click on **Stellar Drive Clone** desktop shortcut (if it is created).
- Click on **Stellar Drive Clone** icon in the dock.

Main User Interface

Stellar Drive Clone has a simple and easy to use graphical user interface. Once you launch **Stellar Drive Clone**, main screen will appear listing the features of the application. Main screen contains all the three modules-Cloning & Imaging, Restore and Tools, menus, tools, buttons and other user options.



Stellar Drive Clone Main Screen

Menus

StellarDriveClone

About Stellar Drive Clone

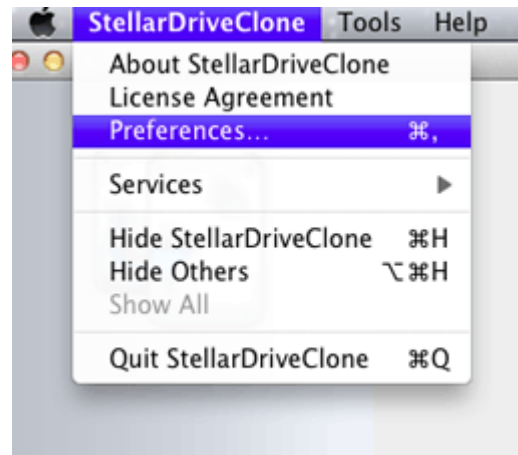
Use this option to read information about **Stellar Drive Clone**.

License Agreement

Use this option to view the license agreement.

Preferences

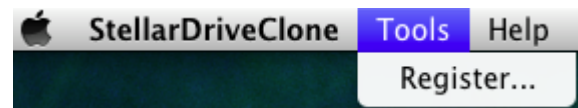
Use this option to set preferences for cloning and personalizing the process.



Tools

Register

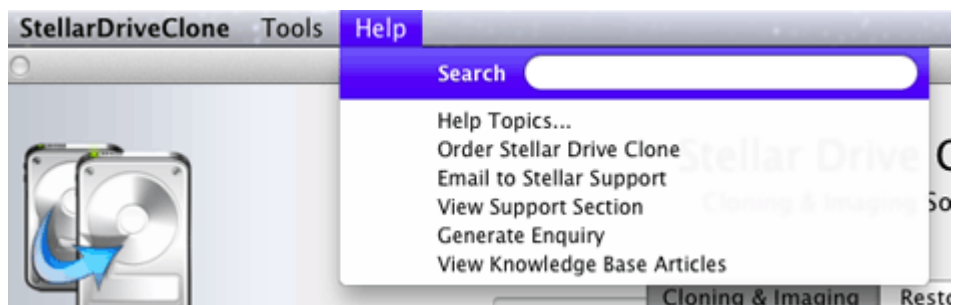
This option is enabled when you are using unregistered version of **Stellar Drive Clone** application. Use it to register your product.



Help

Help Topics

Use this option to view **Stellar Drive Clone** help manual.



Order Stellar

Drive Clone

Use this option

to [buy](#) **Stellar**

Drive Clone

Email to Stellar

Support

Use this option
to [mail for](#)
[support](#) against
any problem.

View Support

Section

Use this option
to visit support
page of
[stellarinfo.com](#).

Generate

Enquiry

Use this option
to [submit](#)
[enquiry](#) to
[stellarinfo.com](#).

View

Knowledge

Base Articles

Use this option
to visit
[knowledgebase](#)
[articles](#) of
[stellarinfo.com](#).

Tabs and Buttons

Tabs

Clone & Imaging Tab

This tab is located on the main screen of **Stellar Drive Clone**. Click this if you want to clone or image a hard drive/volume.

Restore Tab

This tab is located on the main screen of **Stellar Drive Clone**. Click this if you want to restore a hard drive/volume from a clone or image.

Tools

This tab is located on the main screen of **Stellar Drive Clone**. Click this if you want to create a bootable DVD or a minimal system.

Buttons

Clone



This button is located on the main screen of **Stellar Drive Clone**. Click this to clone Drive/Volume.

Image



This button is located on the main screen of **Stellar Drive Clone**. Click this to create image of Drive/Volume.

Stop



This button is located on the main screen of **Stellar Drive Clone**. It is displayed only when a process is running. Click this to stop the process.

Back



This button is located on the main screen of **Stellar Drive Clone**. Click this to move to previous screen of application.

Continue



This button is located on the main screen of **Stellar Drive Clone**. Click this to continue to next screen of application.

Disk Clone

Disk Clone consists of two advanced options:

Clone & Imaging

- Clone
 - Disk Clone
 - Clone without resizing
 - Clone with resizing

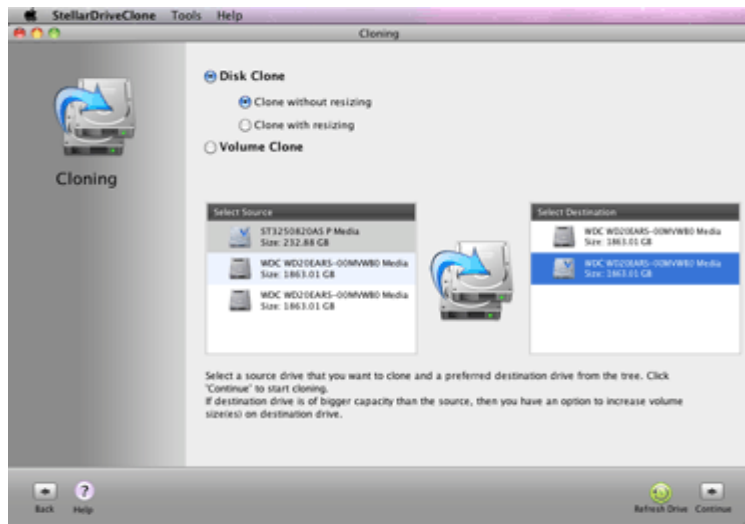


Clone without Resizing

If the target drive is of same size as the source drive, or of size greater than the source drive but the extra space is not needed then cloning can be performed without resizing the volumes of destination drive.

To Clone Hard Drive without Resizing

1. Run **Stellar Drive Clone** application.
2. Under **Clone & Imaging** tab, click **Clone** button icon. **Cloning** screen is displayed.
3. Select **Disk Clone** option and then select **Clone without resizing** option.
4. Select the *source drive* and *destination drive* from **Select Source** list and **Select Destination** list, respectively.
5. Click **Continue** to start cloning process.



Note: To clone a drive/volume, the destination

must be equal or greater than
the source.

By default, the source drive will clone to the destination drive without any changes.

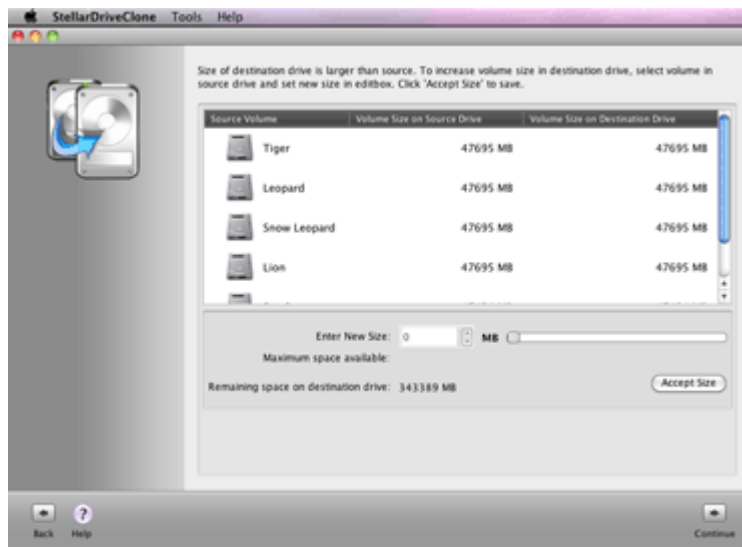
If the destination drive is larger than the source drive, you can resize the destination drive volume to make full use of it.

Clone with Resizing

When the target drive is of size greater than the source drive then the extra space left after cloning will become useless. To make use of the extra space, Clone with resizing feature of **Stellar Drive Clone** can be used to distribute the space among other volumes.

To resize the Volume on the destination drive

1. Run **Stellar Drive Clone** application.
2. Under **Clone & Imaging** tab, click **Clone** button icon. **Cloning** screen is displayed.
3. Select **Disk Clone** option and then select **Clone with resizing** option.
4. Select the *source drive* and *destination drive* from **Select Source** list and **Select Destination** list, respectively.
5. Click **Continue**. Resizing window is displayed.
6. Select the volume you want to resize. Enter new size or drag the slider to specify new size of the



Volume(s) in the destination drive. Each time you make a change in the size, click **Accept Size** button to save the changes.

7. Click **Continue** button to start cloning process.

Volume Clone

Clone Drive consists of three advanced options:

Clone & Imaging

- Clone
 - Volume Clone
 - Clone Volume to Volume
 - Clone Volume to Network Drive
 - Clone Volume to Folder

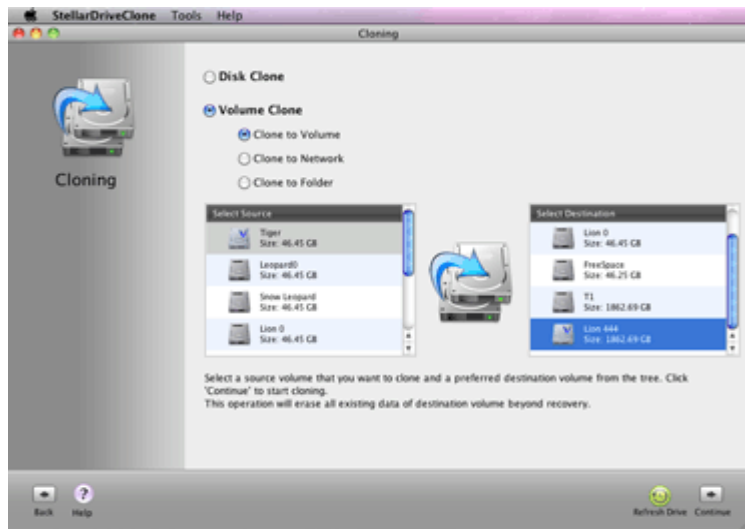


Clone Volume to Volume

Clone Volume feature is used to create clone of a volume on another volume in the same drive or another drive. The clone would contain all files and folders of the source volume. This volume can be used either as a bootable volume or as a backup. The cloning process will overwrite existing data beyond recovery.

To Clone to Volume

1. Run **Stellar Drive Clone** application.
2. Under **Clone & Imaging** tab, click **Clone** button icon. **Cloning** screen is displayed.
3. Select **Volume Clone** option and then select **Clone Volume** option.
4. Select the *source drive* and *destination drive* from **Select Source** list and **Select Destination** list, respectively. You get a warning message, that the operation will overwrite existing data. Make sure that you have selected the right source



and destination.

5. Click **Continue** to start

cloning process.

This operation will completely erase the destination volume beyond recovery. If you select free space as the destination drive, the application will first create partition using free space and then perform the clone operation.

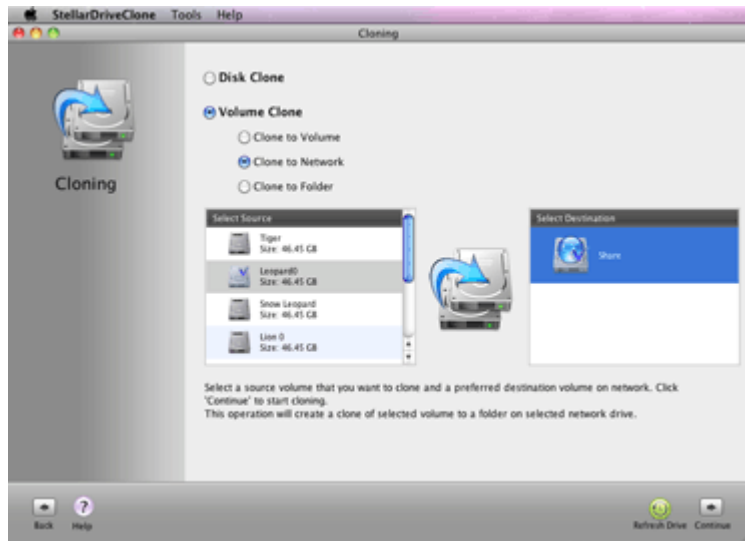
Note: In volume clone, data within the volume is considered other than volume size.

Clone Volume to Network Drive

'Clone to Network' feature is used to create a copy of the source volume on a drive in the network. This will work only as a backup.

To Clone to Network Drive

1. Run **Stellar Drive Clone** application.
2. Under **Clone & Imaging** tab, click **Clone** button icon. **Cloning** screen is displayed.
3. Select **Volume Clone** option and then select **Clone to Network** option.
4. Select the *source drive* from **Select Source** list.
The **Select Destination** list will show all the network drives connected to the system. Select the required destination in the network. Make sure that all the other network drives are disconnected.
5. Click **Continue** to start cloning process.



Once the process is completed, entire data in the source volume will be cloned to the destination.

- Disconnect all the other network drives, except the selected one.
- Make sure that the files and folders have all permissions (Read, Write and Execute permissions). Otherwise, you will not be able to access those files/folders in the network.

Clone Volume to Folder

'Clone Volume to Folder' feature is used to create a copy of the source volume on a folder/volume located in another drive. The copy works exactly as the source volume. So, by cloning a boot partition, you can use the clone for booting your system in the event of system crash. The resultant folder can thus be used as a backup as well as boot disk.

To Clone to Folder

1. Run **Stellar Drive Clone** application.
2. Under **Clone & Imaging** tab, click **Clone** button icon. **Cloning** screen is displayed.
3. Select **Volume Clone** option and then select **Clone Volume to Folder** option.
4. Select the *source drive* from **Select Source** list.
To select destination volume/folder, click **Choose Destination** button.
5. You need to navigate to the *destination volume/folder* and click **Choose**.
6. Click **Continue** to start



cloning process.

Once the process is completed, entire data in the source volume will be cloned to the destination.

- In volume clone, data within the volume is considered other than volume size.
- Disconnect all the network drives, before cloning the boot drive or main hard drive.

Create Drive/Volume Image

Image file contains complete content of a hard drive or volume. When an image file is created, drive/volume unused space and bad sectors are not included in it. So, it requires less storage space. Image file can be used to restore the entire disk or volume in the event of system crash.

Stellar Drive Clone can be used to create image of both hard drive and volumes.

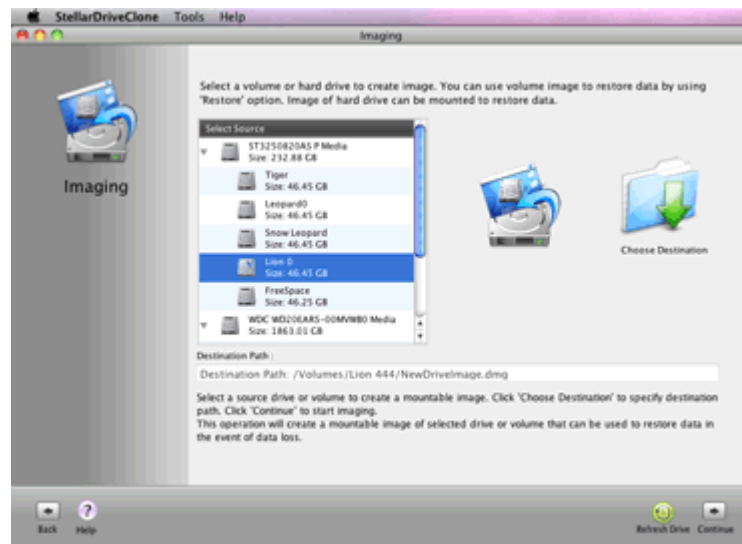
To Create Drive/volume Image

1. Run **Stellar Drive Clone** application.

2. Under **Clone & Imaging** tab, click **Imaging** button icon. **Imaging** screen is displayed.

3. Select the *source drive/volume* from **Select Source** list.

If you have selected the boot volume as source drive, a message is displayed from where you can choose to create image of boot volume with minimal system.



Click **Choose**

Destination button

to select

destination

volume/folder.

4. Navigate to the destination drive/volume, specify the name for the image file and click **Save**.
5. Click **Continue** to start imaging process.

Note: Destination path must be on another hard drive.

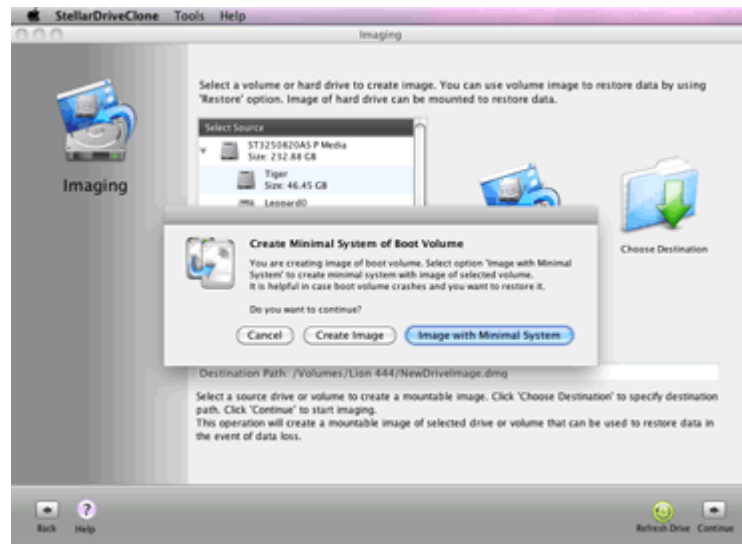
Once the process is completed, image of the drive will be saved to the specified destination.

Create Image of Boot Volume with Minimal System

Stellar Drive Clone allows creating boot volume with a minimal system installed in it. This minimal system runs like an operating system having minimal functions. You can run allowed programs and perform basic functions with its help.

To create image of the boot volume with minimal system

1. Run **Stellar Drive Clone** application.
2. Under **Clone & Imaging** tab, click **Imaging** button icon. **Imaging** screen is displayed.
3. Select the boot volume from **Select Source** list. **Create Minimal System of Boot Volume** message is displayed. Click **Image with minimal System** button.
4. **Choose Destination** button to select



- destination
volume/folder.
5. Navigate to the
destination
drive/volume,
specify the name
for the image file
and click **Save**.
 6. Click **Continue** to
start imaging
process.

Note: Destination path must be on another hard drive.

Once the process is completed, image of the drive will be saved to the specified destination.

Restore Volume

Restore consists of two options:

- Restore Volume from Folder

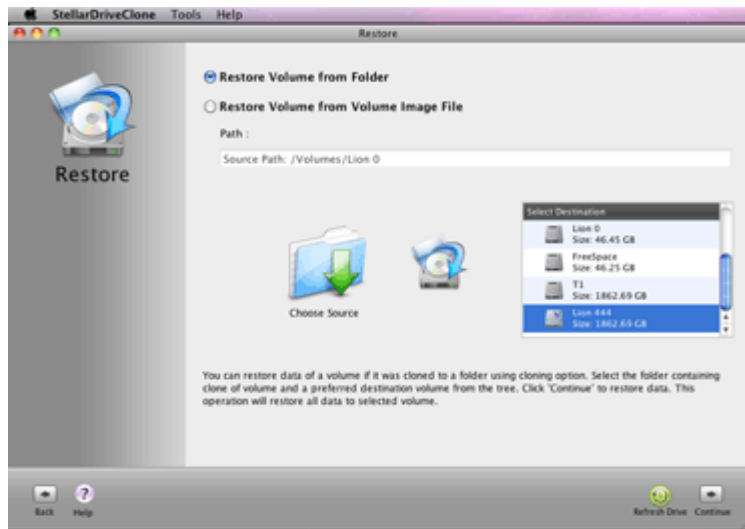
- Restore Volume from Image File

Restore Volume from Folder

Backup/Clone stored in a folder can be restored back to the volume. You can use **Restore Volume from Folder** option to restore from a clone in a folder or to restore specific file or folder. It overwrites existing files with same name with the file that is saved in the clone. Restoration process by **Stellar Drive Clone** is much faster than the manual process.

To Restore Volume from a Folder

1. Run **Stellar Drive Clone** application.
2. Click **Restore** tab button. **Restore** screen is displayed.
3. Select **Restore Volume from Folder** option.
4. Click **Choose Source** button icon to select source drive. Select destination for the restored Volume in the **Select Destination** list.
5. Click **Continue** to start restoration process. The progress bar will indicate the process status.



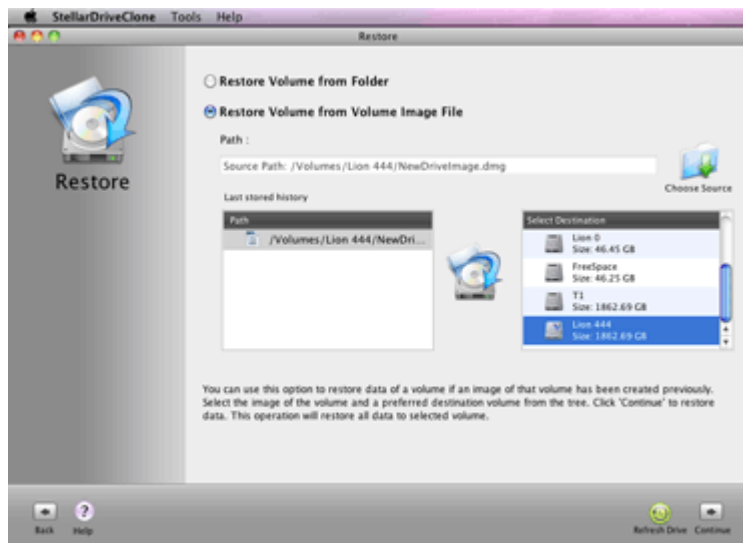
Once the process is completed, the selected folder will be restored to the destination volume.

Restore Volume from Image File

Restore Volume from an Image file allows to copy back the contents of the volume stored as image files to original state. Note that you can only restore the image file created by **Stellar Drive Clone**.

To Restore Volume from an Image File

1. Run **Stellar Drive Clone** application.
2. Click **Restore** tab button.
Restore screen is displayed.
3. Select **Restore Volume from Image File** option.
4. Click **Choose Source** button icon to select source drive. Select destination for the restored Volume in the **Select Destination** list.
5. Click **Continue** to start restoration process. The progress bar will indicate the process status.



Once the process is completed, selected folder will be restored to the destination volume.

Use Tool Options

Tools consists of two options:

- Create Bootable DVD

- Create Minimal System Drive

Create Bootable DVD

Enable you to create a customized bootable Mac DVD which includes one or more applications. **Stellar Drive Clone** is installed automatically into it. The DVD contains minimal system allowing you to install few utilities. The compatibility of the DVD depends on the machine it is created. That is, if the DVD is created on PowerPC, you can boot only PowerPC machine.

To Create Mac OS bootable DVD

1. Run **Stellar Drive Clone** application.

2. Click **Tools** tab button.

Tools screen is displayed.

3. Select **Bootable DVD** option.

4. Choose the destination to save disk image. The disk image takes around

5.0GB of space. So, make

sure the chosen

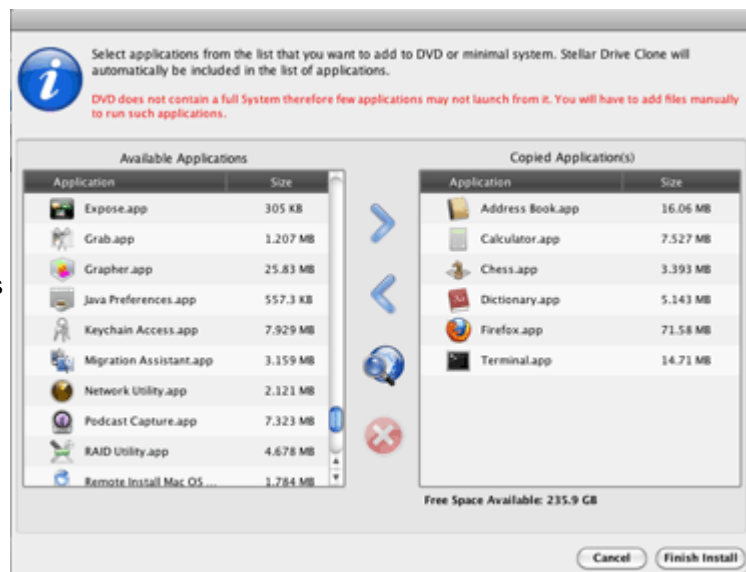
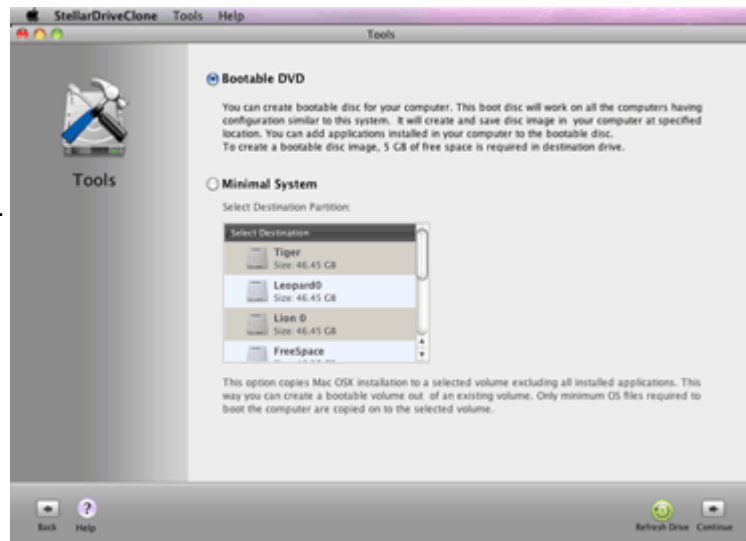
destination contains more than 5.0GB.

5. Click **Continue**.

Add/Remove applications dialog box is displayed.

6. **Add/Remove Buttons:**




- Select application in the left pane and click ➡ button



to add application
from the list.

Added

applications are
listed in the right
pane.

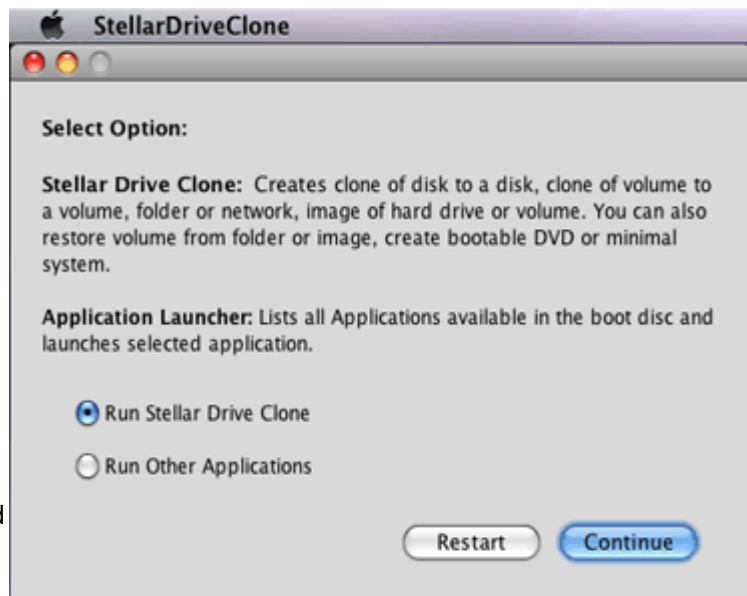
- Select application
in the right pane
and click  button
to remove
application from
the list of added
applications.
- Click  button to
browse and add
application.
- Click  button to
remove added
application.

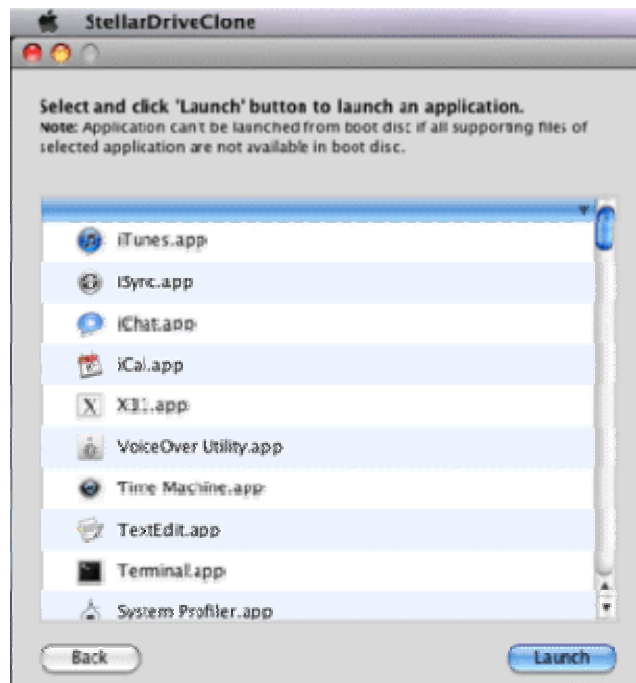
7. Click **Finish Install** to
start image creation.
8. A busy process icon is
displayed while the image
is created. In case you
want to stop the process
in between, click **Stop**
button. By default, image

- is named as
- StellarBootDVD.dmg* or
- StellarBootDVD.Sparseim*
- age (in Leopard).
9. Once the image is created, you get a message '*Do you want to burn image into DVD?*'. Click **Yes**, to proceed further. If you want to burn the image into the DVD at later stage, click **No**.
 10. Insert the DVD, to start the burning process.
 11. Once the process is completed, the DVD will get ejected.

To Use the Bootable DVD

1. Insert the DVD and boot the system.
2. System will boot from the DVD and show the **Select Option** screen.
3. Select **Run Other Applications** option. Click **Continue** button.
4. Select the application and click **Launch** button to start application. Selected application is launched in the background. Move the application window to access it. Click **Back** button and click **Restart** to restart the computer.



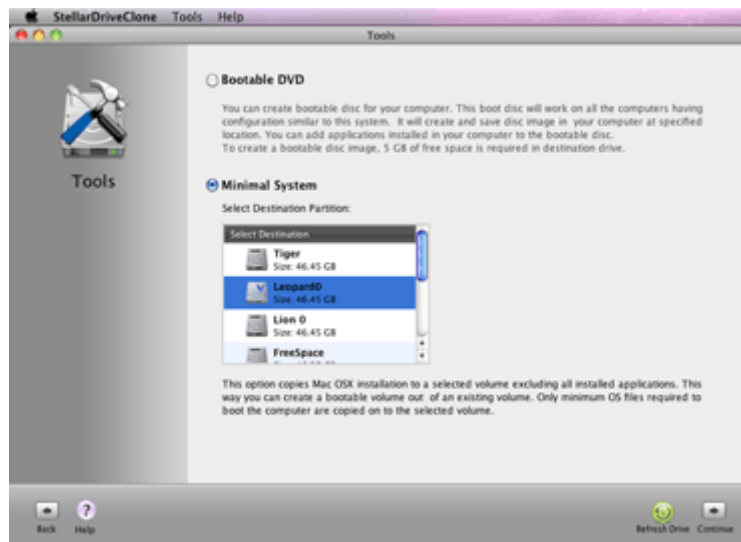


Note: The selected application will not launch, if its dependent files are not available in the bootable DVD.


Create Minimal System Drive

To Create Minimal System

1. Click **Tools** tab button. **Tools** screen is displayed.
2. Select **Minimal System** option.
3. By default, the boot Volume is selected in *Select Source* list.



4. Select the Destination Drive from the *Select Destination* list and click **Continue**. It is recommended to select the secondary drive.
5. Click **Continue**. **Add/Remove** applications dialog box is displayed.
6. Click ➤ button to select applications from the list of installed programs. You can also click **Find** button to add an application by browsing to its location.
7. Click **Finish Install** to start image creation.
8. You get a warning message that Copy of disk process can erase data in the destination drive completely beyond recovery, so make sure that you have taken proper backup of the important data. Click **Continue**, to proceed.
9. The progress bar shows the copying process. In case you want to stop the process in between, click **Stop** button.

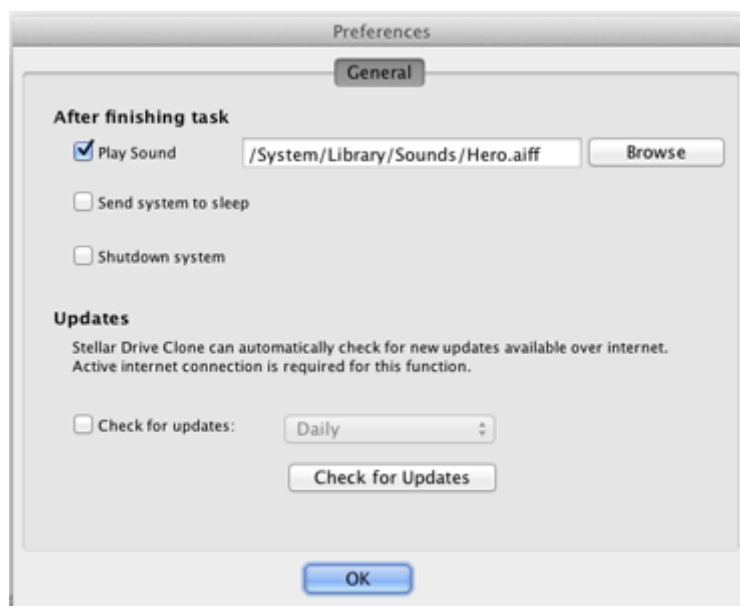
10. Once the process is completed, a window appears showing the all the installed applications in the Applications Folder.
11. Select the **desired application** from the *Applications Installed* list and click  button. The selected applications will add to the *Copies Applications* list.
12. Click **Finish Install**, to complete the process.

Set Preferences

General preferences allow setting tasks that will be performed at the end of any process by **Stellar Drive Clone**.

To change finish task preferences

1. Run **Stellar Drive Clone** application.
2. Click **Continue** button.
3. On the **StellarDriveClone** menu, click **Preferences** option.
4. In the **After finishing task** section,
 - To assign a sound that will be played at the end of process, select **Play Sound** option. Click **Browse** button to select a saved sound file.
 - To send the system to sleep at the end of process, select **Send system to sleep** option.
 - To shutdown the system at end of process, select **Shutdown system**
 - Click **OK** button to save the settings.



To change update task preferences

1. Run **Stellar Drive Clone** application.
2. Click **Continue** button.
3. On the **StellarDriveClone** menu, click **Preferences** option.
4. In the **Updates** section,
 - To assign a frequency for checking of updates, select **Check for updates** option.
 - Select the frequency in the list.
 - Click **OK** button to save the settings. To check for current updates, click **Check for Updates** button.

Troubleshooting

1. **One of my drive is shown as disabled in the Select Source list while trying Drive Clone. When I click the Continue button, Cloning failed message is displayed. How to solve the issue?**

Your drive is probably not mounted. First mount the drive and then try cloning it.

2. **When I try to clone a drive, I get a cloning failed message. The drive is shown as enabled in the Select Source list. What could be the problem?**

Your drive has probably developed bad sectors in it. Repair your drive for bad sectors and then try to clone it.

3. **I have created a clone of my drive on another drive but the volumes of the created drive are not shown any where on the desktop. Where to find them?**

Sometimes the volumes created after cloning are placed overlapping on the volumes of the source drive. You have to drag and place the volume icons to a different location on desktop. Rename the Volumes after placing to new location for identification.

4. **When I try to boot my system from destination drive after cloning the drive, the system does not boot. How to resolve this issue?**

If you are having trouble in booting your system from destination drive, remove the source drive from your system and then boot your system from destination drive.

FAQs

1. Can 'Stellar Drive Clone' create bootable drives?

Yes, Stellar Drive Clone can create bootable drives by cloning. The software creates an exact replica of the hard drive on another drive. So the clone can be used as a back up and also as a bootable disk.

2. I need to back up my personal folder to the network drive. Is it possible?

Yes, you can. Stellar Drive Clone provides an option Clone Volume to Network Drive in Clone, which will help you to create backup in the network drive.

3. Will I be able to use the free space in the destination drive after cloning the source drive?

Yes, you can. When you clone a hard drive, Stellar Drive Clone provides an option to resize the volume of the destination drive. You need to select Resize volume(s) on Destination Drive option before cloning the drive. This will allow you to resize the volume and use the free space fruitfully.

4. Can I use the clone of my old hard drive in my new system?

Yes, you can use the clone in your new system as boot drive or as backup. Remember, clone of the main hard drive can only be used as boot drive.

5. How much time is required for cloning a drive?

The time required for cloning depends on many factors. Few of them are listed below:

- Quantity of data
- Data transfer speed of the source and target drives.
- Size distribution of files on the source volume.
- Hardware interface performance.
- Method used for data transfer.
- The architecture and speed of the processor speed.

6. I have a backup of my important folder in my network, but I am not able to access it. Why?

While cloning to network, make sure that the files and folders have all permissions. Otherwise, you won't be able to access it. In your case, the folder might not have all the permissions. So please check the read, write and execute permissions of the folder and repeat the cloning process.

7. What is MBR?

A master boot record (MBR), or partition sector, is the 512-byte boot sector that is the first sector of a partitioned data storage device such as a hard disk. It is a small program that is executed when a computer boots up.

8. What is SSD drive?

A solid-state drive (SSD) is a storage device that use semiconductor chips rather than a magnetic media. Solid state drives have several advantages over the magnetic hard drives. Three distinct advantages are:

- Less Power Usage
- Faster Data Access
- Higher Reliability

Mechanically SSD drives are better as there are fewer moving parts to be damaged in any sort of impact, they do have a limited life span. This comes from a fixed number of write cycles that can be done on a drive before the cells become unusable.

9. I am having NTFS file system on one of my Volumes. Can Stellar Drive Clone clone it?

Yes, but NTFS file system will be cloned as ExFAT file system. This way you will be able to access all your important data on the drive, but cannot boot your system using that drive.

Copyright

Stellar Drive Clone software, accompanied user guide and documentation are copyright of Stellar Information Systems Ltd., with all rights reserved. Under the copyright laws, this user guide cannot be reproduced in any form without the prior written permission of Stellar Information Systems Ltd. No Patent Liability is assumed, however, with respect to the use of the information contained herein.

Copyright © 1995-2012 by Stellar Information Systems Ltd. INDIA

Disclaimer

The Information contained in this manual, including but not limited to any product specifications, is subject to change without notice.

STELLAR INFORMATION SYSTEMS LTD PROVIDES NO WARRANTY WITH REGARD TO THIS MANUAL OR ANY OTHER INFORMATION CONTAINED HEREIN AND HEREBY EXPRESSLY DISCLAIMS ANY IMPLIED WARRANTIES OF MERCHANTABILITY OR FITNESS FOR ANY PARTICULAR PURPOSE WITH REGARD TO ANY OF THE FOREGOING STELLAR INFORMATION SYSTEMS LTD ASSUMES NO LIABILITY FOR ANY DAMAGES INCURRED DIRECTLY OR INDIRECTLY FROM ANY TECHNICAL OR TYPOGRAPHICAL ERRORS OR OMISSIONS CONTAINED HEREIN OR FOR DISCREPANCIES BETWEEN THE PRODUCT AND THE MANUAL. IN NO EVENT SHALL STELLAR INFORMATION SYSTEMS LTD, BE LIABLE FOR ANY INCIDENTAL, CONSEQUENTIAL SPECIAL, OR EXEMPLARY DAMAGES, WHETHER BASED ON TORT, CONTRACT OR OTHERWISE, ARISING OUT OF OR IN CONNECTION WITH THIS MANUAL OR ANY OTHER INFORMATION CONTAINED HEREIN OR THE USE THEREOF.

License Agreement

Stellar Drive Clone

Copyright © 1995-2012 by Stellar Information Systems Ltd. INDIA

www.stellarinfo.com

All rights reserved.

All product names mentioned herein are the trademarks of their respective owners.

This license applies to the standard-licensed version of Stellar Drive Clone.

Your Agreement to this License

You should carefully read the following terms and conditions before using, installing or distributing this software, unless you have a different license agreement signed by Stellar Information Systems Ltd.

If you do not agree to all of the terms and conditions of this License then do not copy, install, distribute or use any copy of Stellar Drive Clone with which this License is included, you may return the complete package unused without requesting an activation key within 30 days after purchase for a full refund of your payment.

The terms and conditions of this License describe the permitted use and users of each Licensed Copy of Stellar Drive Clone. For purposes of this License, if you have a valid single-user license, you have the right to use a single Licensed Copy of Stellar Drive Clone. If you or your organization has a valid multi-user license, then you or your organization has the right to use up to a number of Licensed Copies of Stellar Drive Clone equal to the number of copies indicated in the documents issued by Stellar when granting the license.

Scope of License

Each Licensed Copy of Stellar Drive Clone may either be used by a single person or used non-simultaneously by multiple people who use the software personally installed on a single workstation. This is not a concurrent use license.

All rights of any kind in Stellar Drive Clone, which are not expressly granted in this license, are entirely and exclusively reserved to and by Stellar Information Systems Ltd. You may not rent, lease, modify, translate, reverse engineer, decompile, disassemble or create derivative works based on Stellar Drive Clone nor permit anyone else to do so. You may not make access to

Stellar Drive Clone available to others in connection with a service bureau, application service provider or similar business nor permit anyone else to do so.

Warranty Disclaimers and Liability Limitations

Stellar Drive Clone and all accompanying software, files, data and materials are distributed and provided AS IS and with no warranties of any kind, whether expressed or implied. You acknowledge that good data processing procedure dictates that any program including Stellar Drive Clone must be thoroughly tested with non-critical data before there is any reliance on it and you hereby assume the entire risk of all use of the copies of Stellar Drive Clone covered by this License. This disclaimer of warranty constitutes an essential part of this License. In addition, in no event does Stellar authorize you or anyone else to use Stellar Drive Clone in applications or systems where its failure to perform can reasonably be expected to result in a significant physical injury or in loss of life. Any such use is entirely at your own risk and you agree to hold Stellar harmless from any and all claims or losses relating to such unauthorized use.

In no event shall Stellar Information Systems Limited or its suppliers be liable for any special, incidental, indirect, or consequential damages whatsoever (including, without limitation, damages for loss of business profits, business interruption, loss of business information, or any other pecuniary loss) arising out of the use of or inability to use the software product or the provision of or failure to provide support services, even if Stellar Information Systems Limited has been advised of the possibility of such damages. In any case, Stellar Information Systems Limited's entire liability under any provision shall be limited to the amount actually paid by you for the software product.

General

This License is the complete statement of the agreement between the parties on the subject matter and merges and supersedes all other or prior understandings, purchase orders, agreements and arrangements. This License shall be governed by the laws of the State of Delhi, India. Exclusive jurisdiction and venue for all matters relating to this License shall be in courts and fora located in the State of Delhi, India and you consent to such jurisdiction and venue. There are no third party beneficiaries of any promises, obligations or representations made by Stellar herein. Any waiver by Stellar of any violation of this License by you shall not constitute nor contribute to a waiver by Stellar of any other or future violation of the same provision or any other provision of this License.

Copyright © 1995-2012 by Stellar Information Systems Ltd. All rights reserved.

Trademarks

StellarDriveClone® is a registered trademark of Stellar Information Systems Ltd.

Mac OS X® is a registered trademark of Apple Computers.

All Trademarks Acknowledged.

All other brands and product names are trademarks or registered trademarks of their respective companies.

About Stellar

Stellar Information Systems Ltd. is a trusted name in the field of Data Recovery and Data Protection Software for more than a decade.

We provide the widest range of Data Recovery Products. Our range includes Data Recovery Software for almost all Operating Systems and File Systems.

Product line:

Data Recovery

A widest range of data recovery software that helps you recover your valued data lost after accidental format, virus problems, software malfunction, file/directory deletion, or even sabotage!.

[More Info >>](#)

File Recovery

The most comprehensive range of file undelete and unerase software for Windows and MS office repair tools. [More Info >>](#)

E-mail Recovery

A wide range of e-mail recovery, e-mail repair and e-mail conversion applications for MS Outlook, MS Outlook Express and MS Exchange useful in instances of data loss due to damages and corruption of E-mail. [More Info >>](#)

Data Protection

A wide range of Prevent Data Loss, Data backup and Hard Drive Monitoring Applications to ensure complete data protection against hard drive crash. [More Info >>](#)

Data Sanitization

Data cleanup and file eraser utility can delete selected folders, groups of files, entire logical drives, System Traces & Internet traces. Once the data have been removed using Stellar Wipe - Data File eraser utility, it is beyond recovery limits of any Data Recovery Software or utility. [More Info >>](#)

For more information about us, please visit www.stellarinfo.com